

**WHO:**  
**YOU!**

---

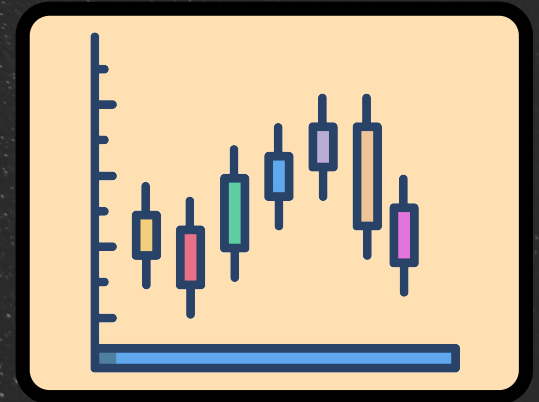
**WHERE:**  
Science Center 204

---

**WHEN:**  
Friday, February 6th

---

**TIME:**  
2:00PM – 3:30 PM



# Reading Quantitative Papers and Interpreting Regressions

## SSQL Workshop

Reading quantitative research doesn't have to be intimidating. This workshop will help you read quantitative social science papers with confidence, with extra focus on understanding regression analysis. Learn practical strategies for interpreting key tables, figures, and regression results in published research. Scan the QR code or visit the link below to register.

register: <https://forms.gle/KVH9dSY1PtWWatiL9>

## WHAT TO EXPECT:

- Quickly interpret tables, charts, and main findings
- Understand regression tables and key terms
- Recognize common issues and misinterpretations
- Build skills for evaluating regression-based evidence

for more: <http://swarthmore.edu/ssql>