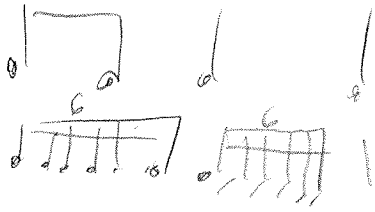


Handwritten musical score for the first system, measures 1-3. The music is written on four staves (treble, alto, tenor, and bass clefs). The lyrics are: "one ore", "two", and "three". The first measure is marked with a circled '1', the second with a circled '2', and the third with a circled '3'.

Handwritten musical score for the second system, measures 4-6. The music is written on four staves. The lyrics are: "four", "five", and "six". The first measure of this system is marked with a circled '4', the second with a circled '5', and the third with a circled '6'. There is a large diagonal scribble over the first two measures of this system.

Handwritten musical score for the third system, measures 7-9. The music is written on four staves. The lyrics are: "seven", "eight", and "nine". The first measure of this system is marked with a circled '7', the second with a circled '8', and the third with a circled '9'. There is a large diagonal scribble over the second and third measures of this system.

With infinite tenderness



A system of four hand-drawn musical staves. The top staff is in treble clef and contains a single note on the second line. The second staff is in treble clef and contains two notes: one on the first space and one on the second line. The third staff is in bass clef and contains a single note on the second space. The bottom staff is in bass clef and contains a single note on the second space.

A system of four blank hand-drawn musical staves. The top staff is in treble clef, the second and third staves are in treble clef, and the bottom staff is in bass clef.

A system of four blank hand-drawn musical staves. The top staff is in treble clef, the second and third staves are in treble clef, and the bottom staff is in bass clef.

Handwritten musical notation on a four-staff system. The first three staves have treble clefs and contain a single note on the first line of each staff. The fourth staff has a bass clef and contains a single note on the first line.

A blank four-staff musical system with treble clefs on the first three staves and a bass clef on the fourth staff.

A blank four-staff musical system with treble clefs on the first three staves and a bass clef on the fourth staff.

pp

Handwritten musical score for the first system, consisting of five staves. The top staff is a treble clef with a whole note. The second staff is a treble clef with a series of eighth notes, starting with a *pp* dynamic and ending with a *pp* dynamic. A *mf* dynamic is written above the staff with a wedge-shaped hairpin. The third staff is a bass clef with a whole note. The fourth and fifth staves are also bass clefs with whole notes.

Handwritten musical score for the second system, consisting of five staves. The top staff is a treble clef with eighth notes. The second staff is a treble clef with eighth notes and triplets, with a '3' above the first triplet and a '2' above the second. The third staff is a bass clef with eighth notes. The fourth staff is a bass clef with eighth notes and a triplet, with a '3' above it. The fifth staff is a bass clef with eighth notes.

Handwritten musical score for the third system, consisting of five empty staves.

Handwritten musical score for the first system. It consists of four staves: a treble clef staff at the top, followed by two piano staves, and a bass clef staff at the bottom. The first piano staff has a dynamic marking of *ppp* and a slur over the first three measures. The second piano staff has a dynamic marking of *mf* and a slur over the first three measures, with a dynamic change to *pp* in the second measure. The bass clef staff has a dynamic marking of *ppp* in the third measure. The treble clef staff has three triplet markings (3) above the notes in the second and third measures. The first measure of the treble clef staff is marked with a double slash (/).

Handwritten musical score for the second system. It consists of four staves: a treble clef staff, two piano staves, and a bass clef staff. The first piano staff has a dynamic marking of *mf* and a slur over the first three measures. The second piano staff has a dynamic marking of *mf* in the third measure. The bass clef staff has a dynamic marking of *mf* in the third measure. The treble clef staff has three triplet markings (3) above the notes in the first three measures. The first measure of the treble clef staff is marked with a double slash (/).

Handwritten musical score for the third system. It consists of four staves: a treble clef staff, two piano staves, and a bass clef staff. The first piano staff has a dynamic marking of *ppp* and a slur over the first three measures. The second piano staff has a dynamic marking of *ppp* in the third measure. The bass clef staff has a dynamic marking of *ppp* in the third measure. The treble clef staff has two triplet markings (3) above the notes in the first two measures. The first measure of the treble clef staff is marked with a double slash (/).

Handwritten musical notation on four staves. The first staff has a treble clef and a key signature of one sharp (F#). The second staff has a treble clef and a key signature of one flat (Bb). The third staff has a bass clef and a key signature of one sharp (F#). The fourth staff has a bass clef. The notes are sparse, with some rests and a few scattered notes.

Handwritten musical notation on four staves, circled in red. The first staff has a treble clef and a key signature of one sharp (F#). The second staff has a treble clef and a key signature of one flat (Bb). The third staff has a bass clef and a key signature of one flat (Bb). The fourth staff has a bass clef and a key signature of one flat (Bb). The notation includes various notes, rests, and accidentals, with some notes marked with arrows.

Handwritten musical notation on four staves. The first staff has a treble clef. The second staff has a treble clef. The third staff has a bass clef. The fourth staff has a bass clef. The notation is mostly blank, with some faint markings and a few notes.

Handwritten musical score system 1. It consists of five staves. The top staff has a treble clef and contains a melodic line with dynamics *ppp* and *pp*, and triplet markings. The second staff has a treble clef and contains a melodic line with dynamics *mf* and *pp*. The third staff has a treble clef and contains a melodic line with dynamics *mf*. The fourth staff has a bass clef and contains a melodic line with dynamics *ppp* and *mf*. The fifth staff has a bass clef and contains a melodic line with dynamics *mf* and *ppp*, and triplet markings.

Handwritten musical score system 2. It consists of five staves. The top staff has a treble clef and contains a melodic line with dynamics *p* and *ppp*. The second staff has a treble clef and contains a melodic line with dynamics *mf* and *ppp*. The third staff has a treble clef and contains a melodic line with dynamics *ppp*. The fourth staff has a bass clef and contains a melodic line with dynamics *ppp*. The fifth staff has a bass clef and contains a melodic line with dynamics *ppp*.

Handwritten musical score system 3. It consists of five staves. The top staff has a treble clef and contains a melodic line with dynamics *mf* and *p*. The second staff has a treble clef and contains a melodic line with dynamics *mf* and *pp*. The third staff has a treble clef and contains a melodic line with dynamics *mf* and *p*. The fourth staff has a bass clef and contains a melodic line with dynamics *mf* and *p*. The fifth staff has a bass clef and contains a melodic line with dynamics *mf* and *ppp*.



100

1 0 0

2 0 0

3 0 0

4 0 0

5 0 0 0

6 0 0

7 0 0 0

8

9

10

11

12

13

14

15

16

17

