

This presentation contains a conceptual rendering of the Dining and Community Commons. All designs are subject to change.



Town Hall – Project Update

Swarthmore College
Dining & Community Commons Project

October 30 + 31, 2019

Agenda:

1 Site + Landscape

2 Planning

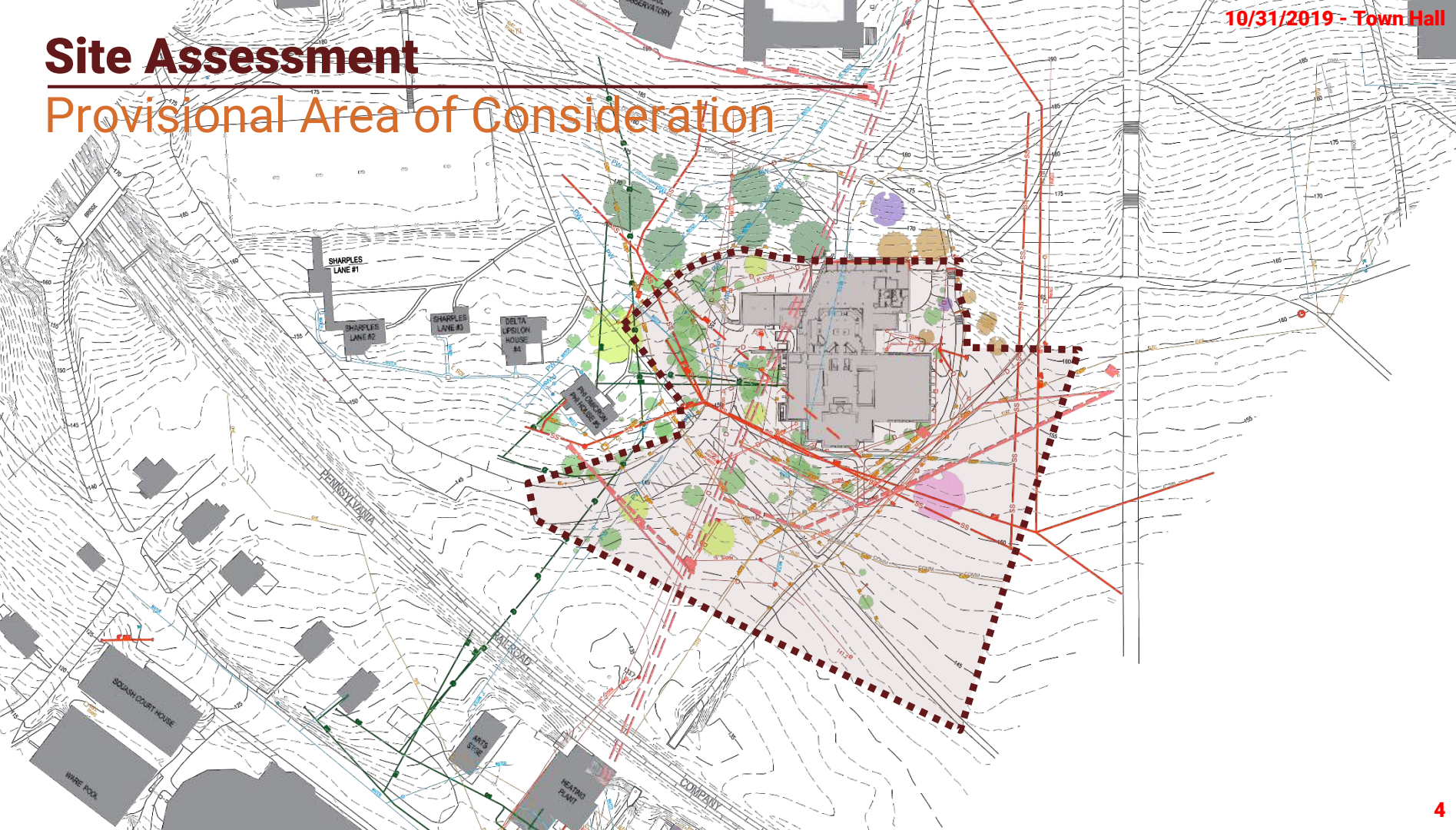
3 Interior Program

4 Sustainability

1 Site + Landscape

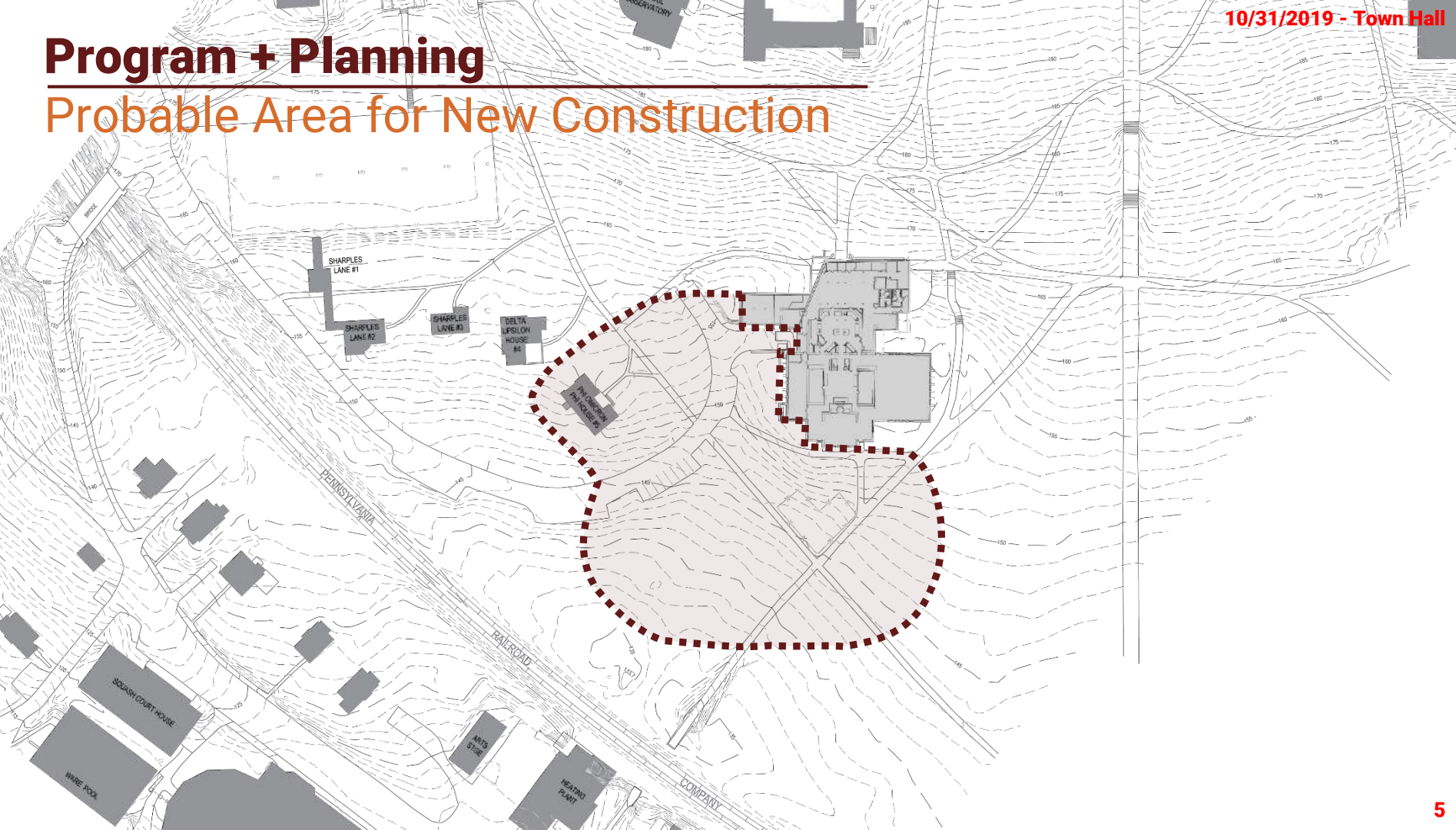
Site Assessment

Provisional Area of Consideration



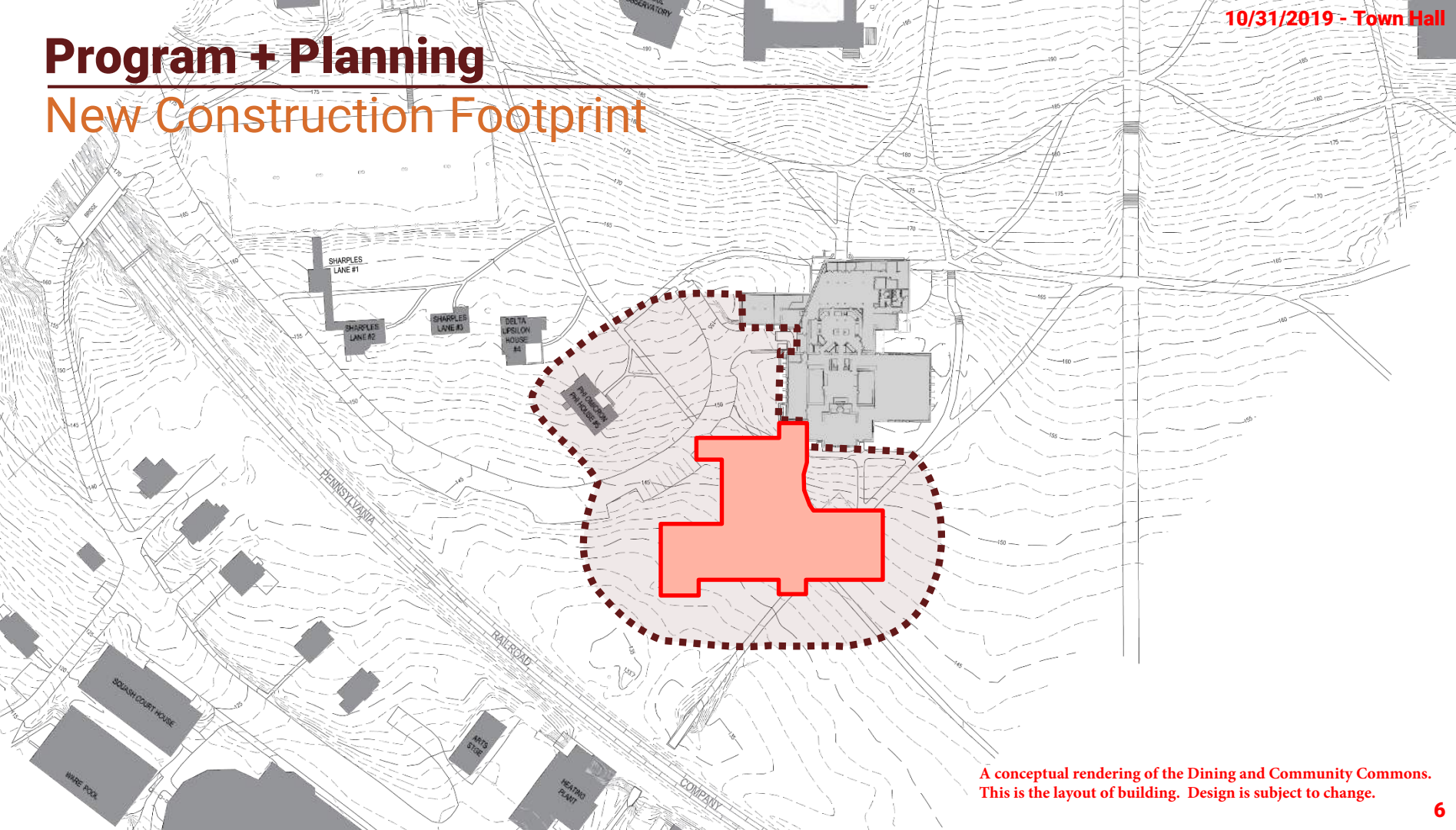
Program + Planning

Probable Area for New Construction



Program + Planning

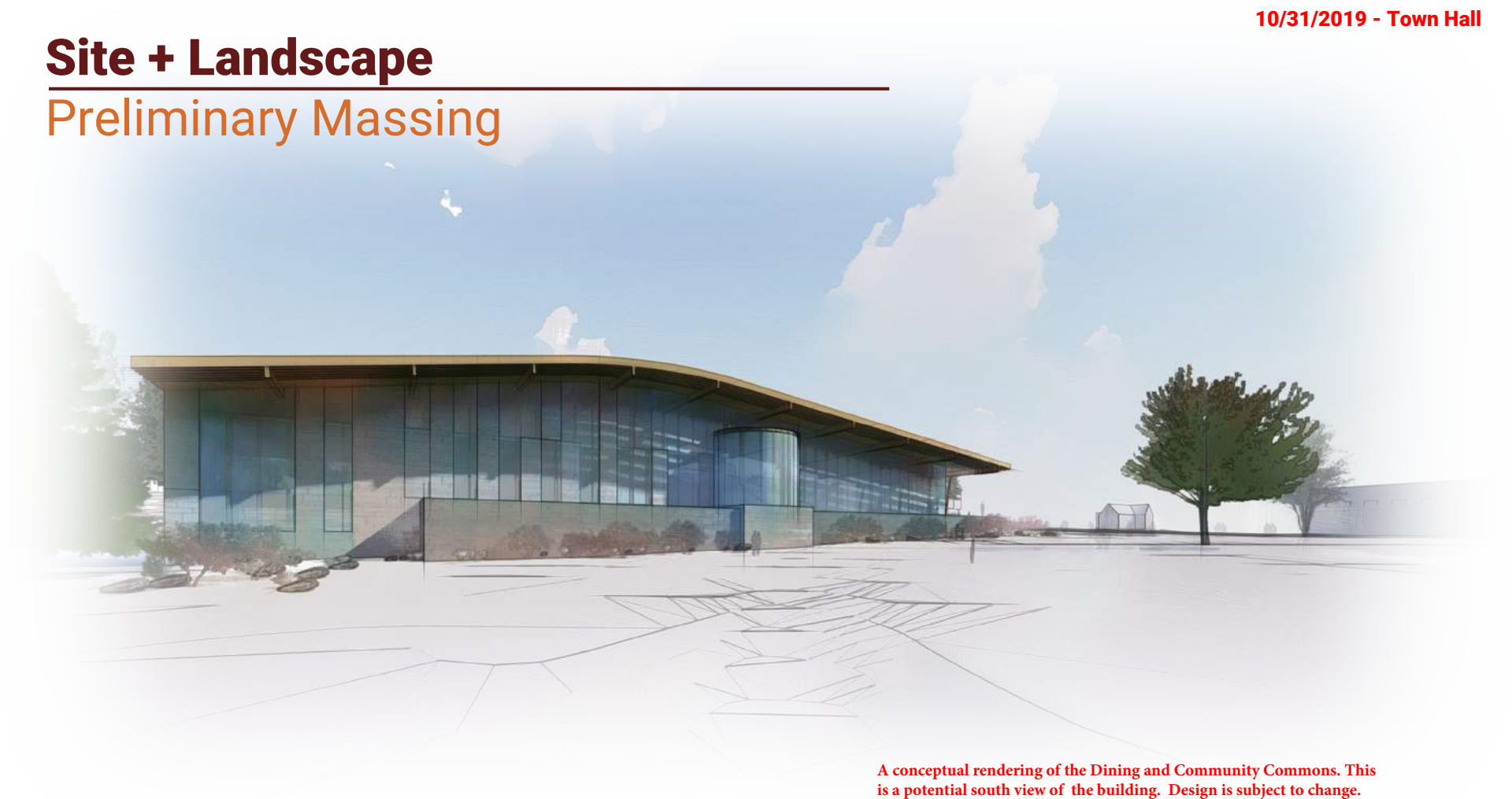
New Construction Footprint



A conceptual rendering of the Dining and Community Commons.
This is the layout of building. Design is subject to change.

Site + Landscape

Preliminary Massing



A conceptual rendering of the Dining and Community Commons. This is a potential south view of the building. Design is subject to change.

Site + Landscape

Preliminary Massing



A conceptual rendering of the Dining and Community Commons. This is a potential southeast view of the building. Design is subject to change.

Site + Landscape

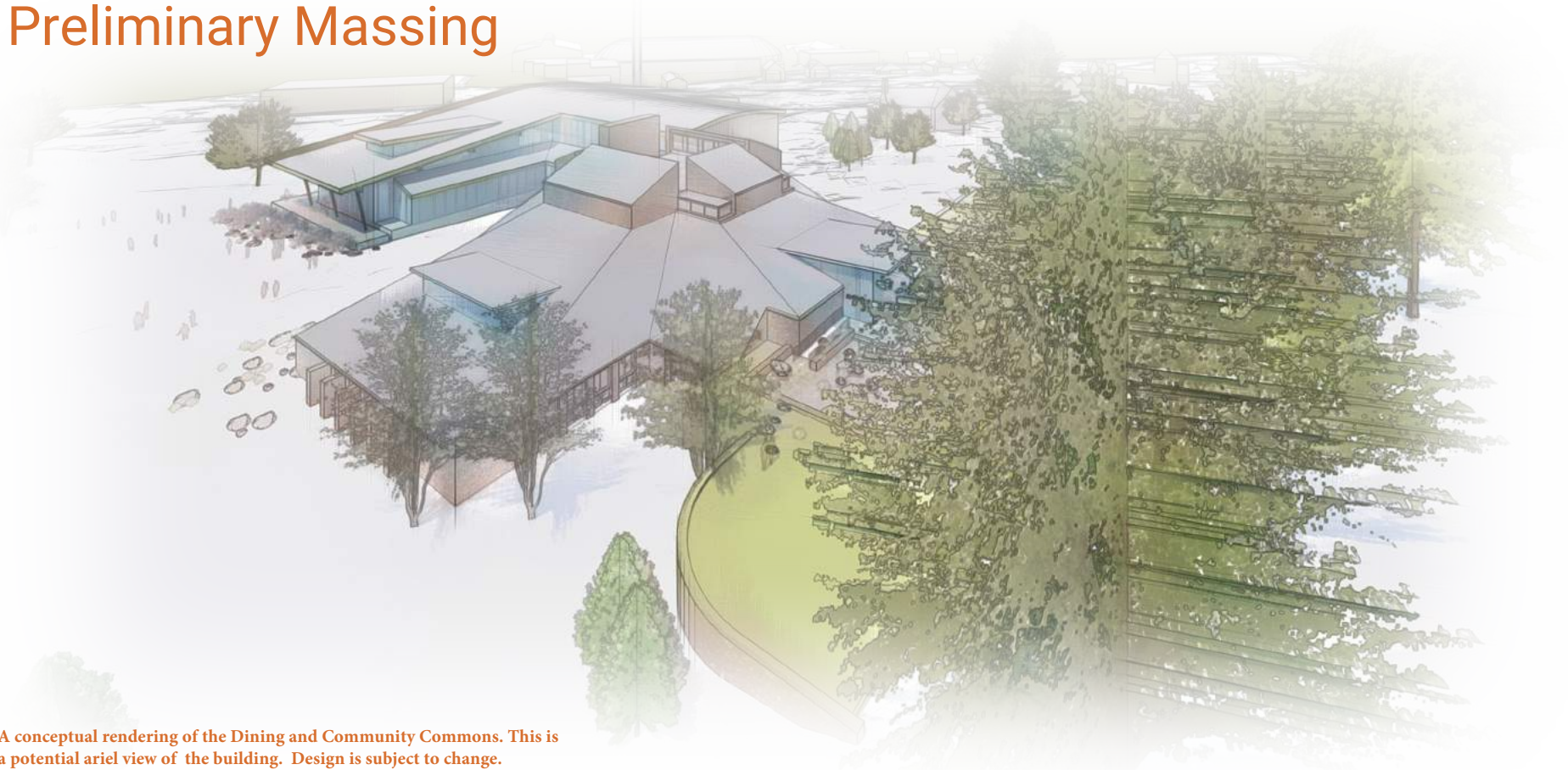
Preliminary Massing



A conceptual rendering of the Dining and Community Commons. This is a potential east view of the building. Design is subject to change.

Site + Landscape

Preliminary Massing



A conceptual rendering of the Dining and Community Commons. This is a potential ariel view of the building. Design is subject to change.

Planting Design

Landscape Themes



A conceptual rendering of the Dining and Community Commons.
This is a potential layout of landscaping. Design is subject to change.

Planting Design

Landscape Types: Lawn



Planting Design

Landscape Types: Meadow



Planting Design

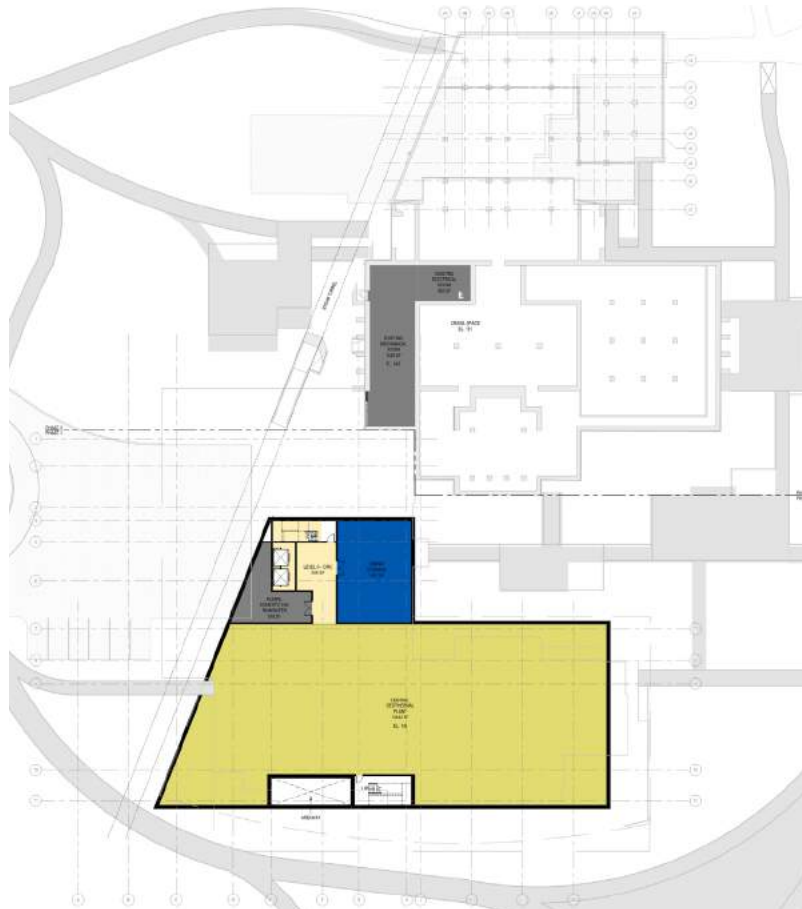
Landscape Types: Permaculture



2 Planning

Planning

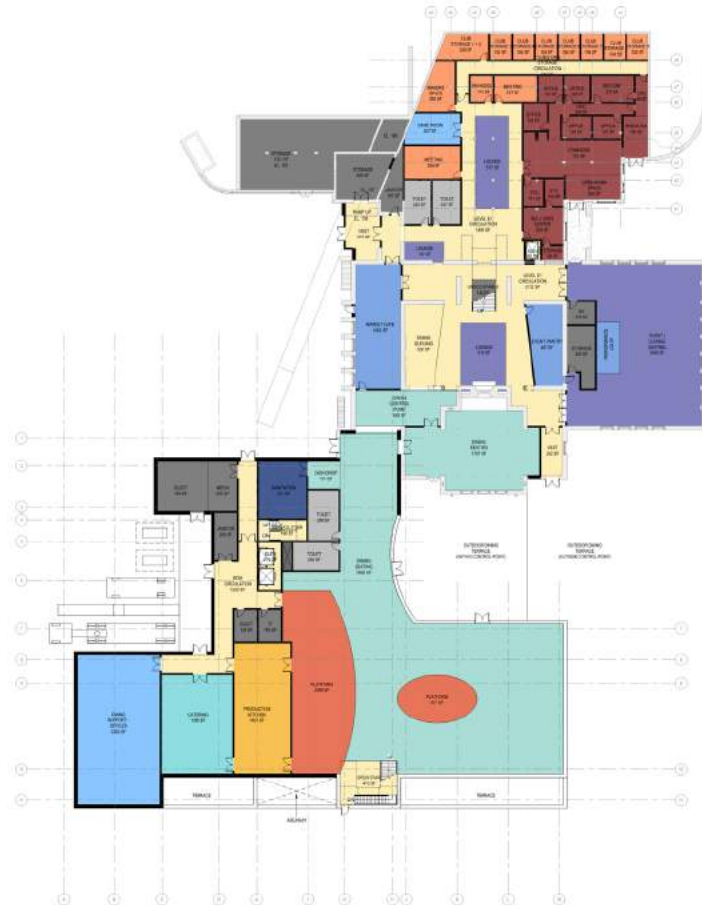
Basement Plan



A conceptual rendering of the Dining and Community Commons. This is a potential floor plan of the basement. Design is subject to change.

Planning

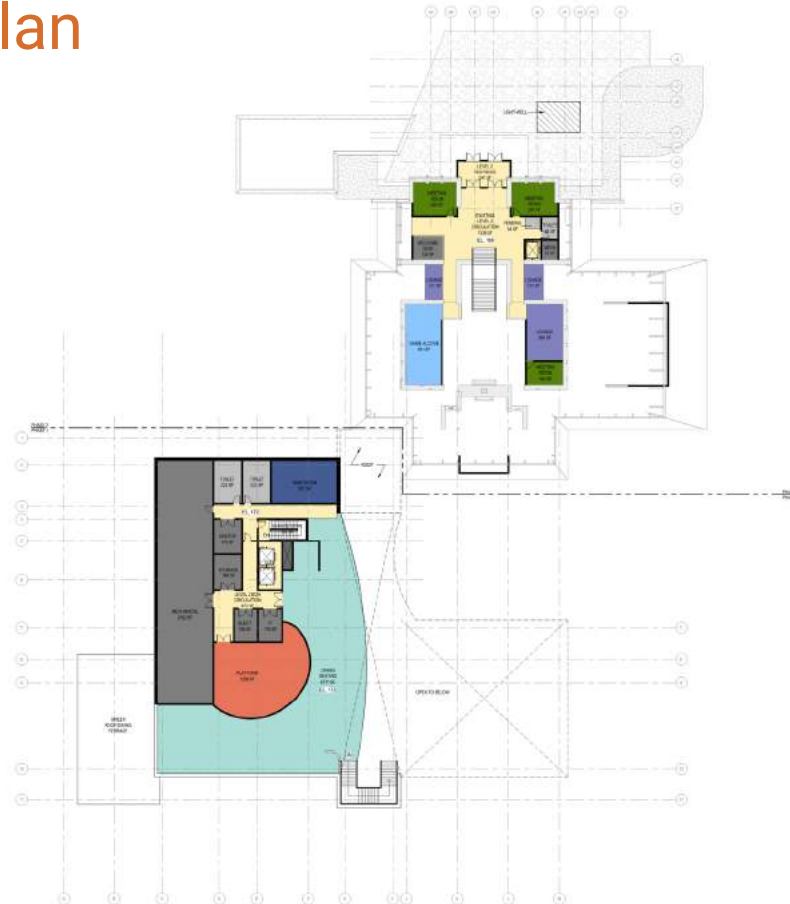
First Floor Plan



A conceptual rendering of the Dining and Community Commons. This is a potential floor plan of the first floor. Design is subject to change.

Planning

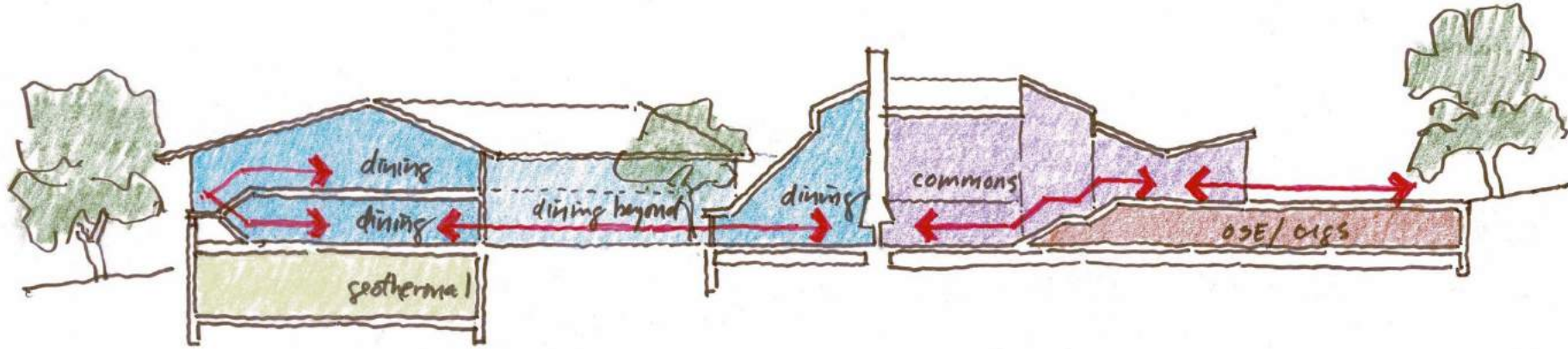
Second Floor Plan



A conceptual rendering of the Dining and Community Commons. This is a potential floor plan of the second floor. Design is subject to change.

Planning

Building Section



A conceptual rendering of the Dining and Community Commons.
This is a potential layout of the building sections. Design is subject to change.

Planning

New Sharples Stair



A conceptual rendering of the Dining and Community Commons.
Potential design for a new staircase. Design is subject to change.

3 Interior Program

Interiors - Social



Interiors

Social

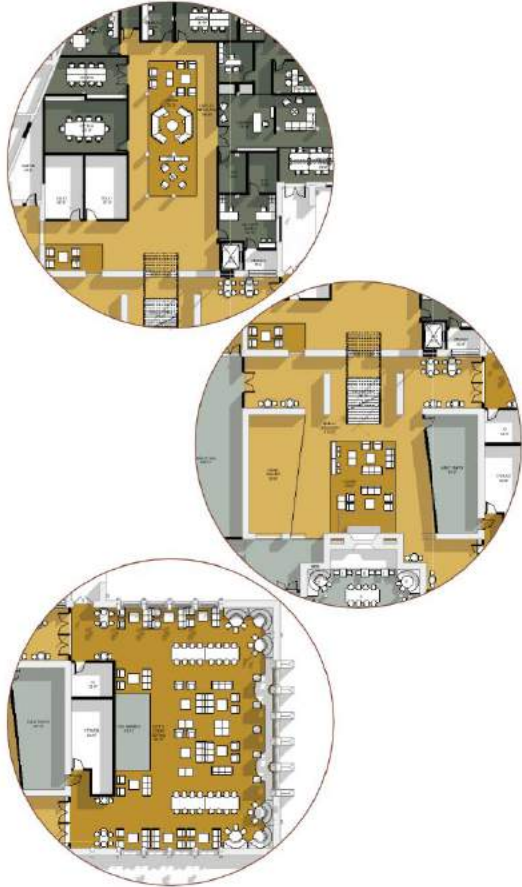
FURNITURE TYPOLOGIES



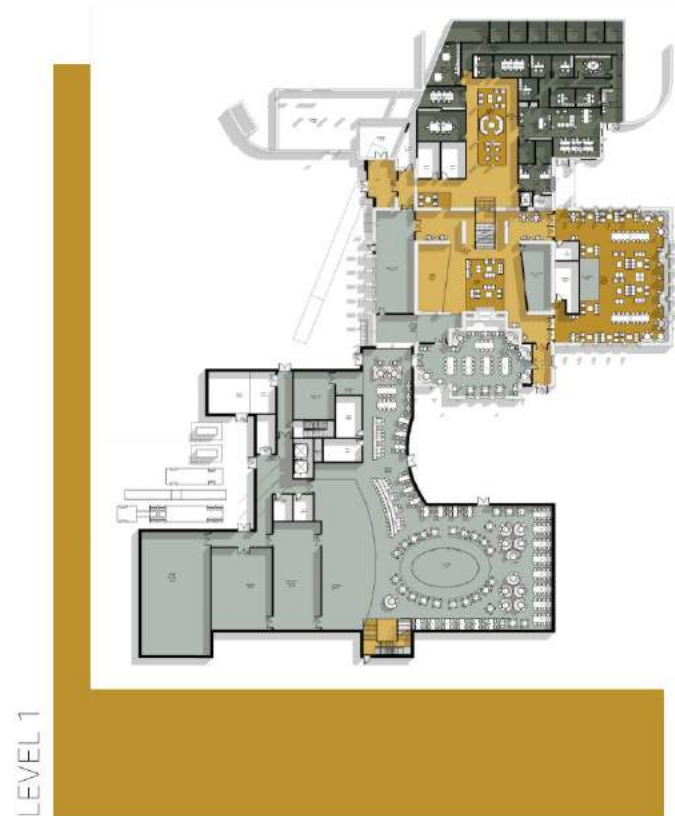
CASUAL GROUP SEATING
SMALL 1-3 PERSON SEATING
SOCIALLY WORKING



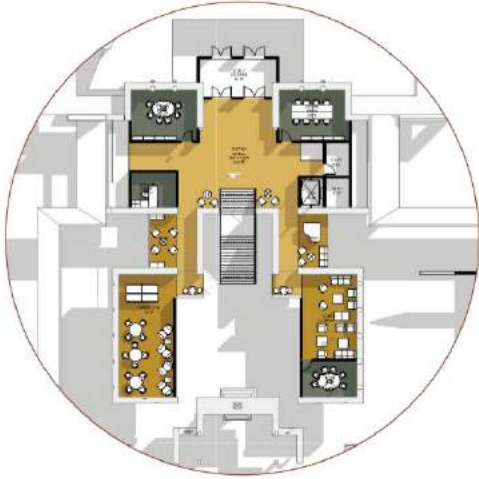
Interiors - Social



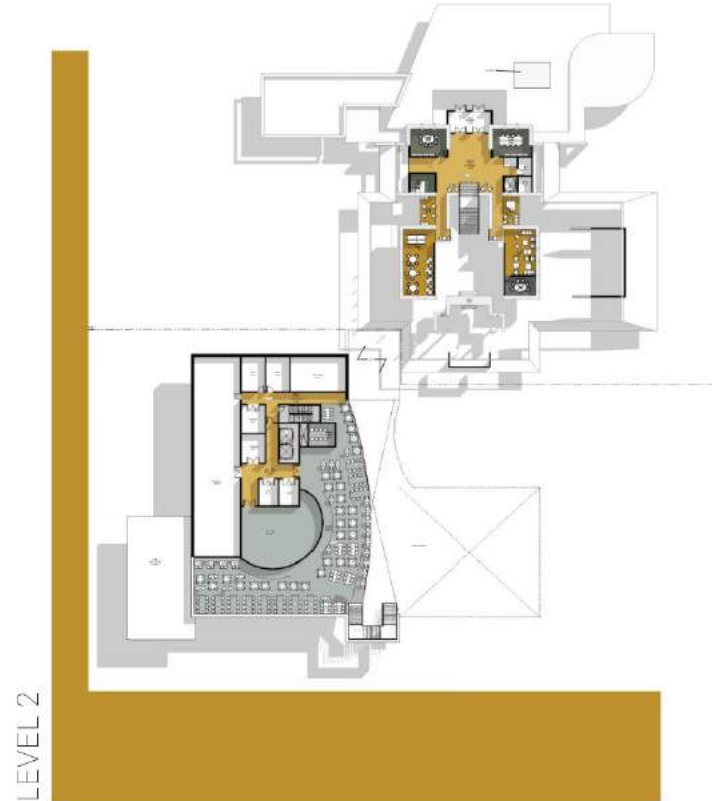
A conceptual rendering of the Dining and Community Commons. This is a potential floor plan of the first floor. Design is subject to change.



Interiors - Social



A conceptual rendering of the Dining and Community Commons. This is a potential floor plan of the second floor. Design is subject to change.



Interiors

Support

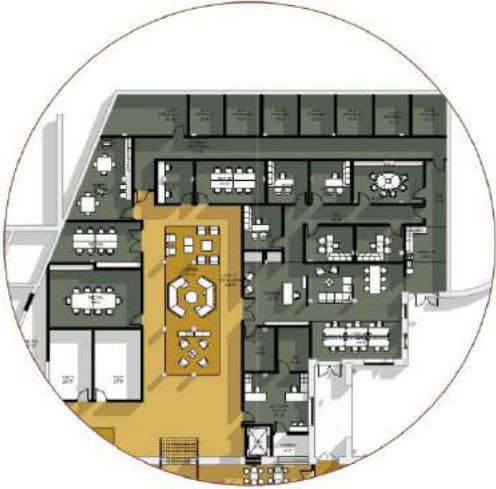
FURNITURE TYPOLOGIES



SMALL WORK GROUPS
MEETING SPACES
TASK AREAS



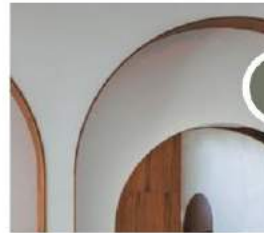
Interiors - Support



A conceptual rendering of the Dining and Community Commons. This is a potential floor plan of the first floor. Design is subject to change.



Interiors - Nourish



Interiors

Nourish

FURNITURE TYPOLOGIES

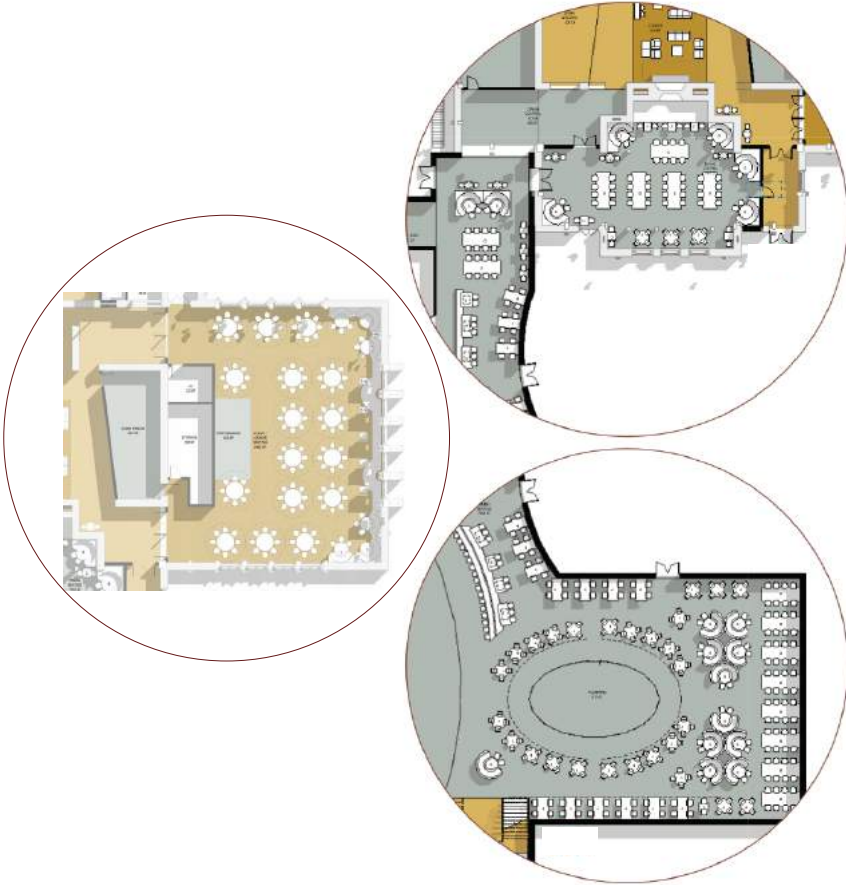


SMALL GROUP SEATING, 4-8
1-3 PERSON SEATING
CLUB/TEAM SEATING

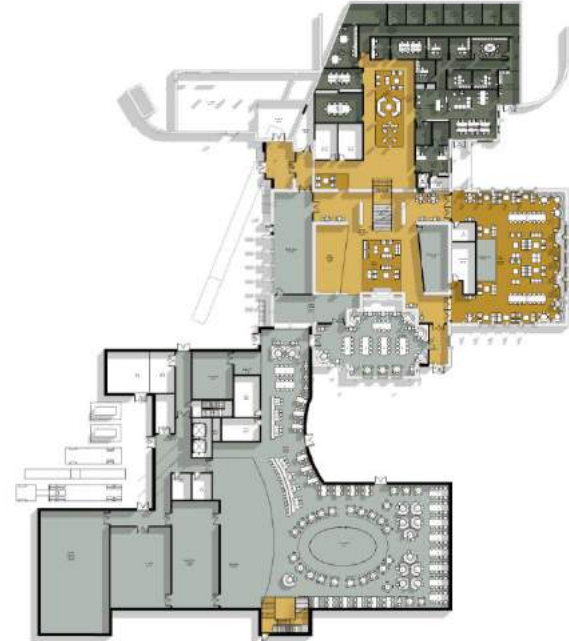


Interiors - Nourish

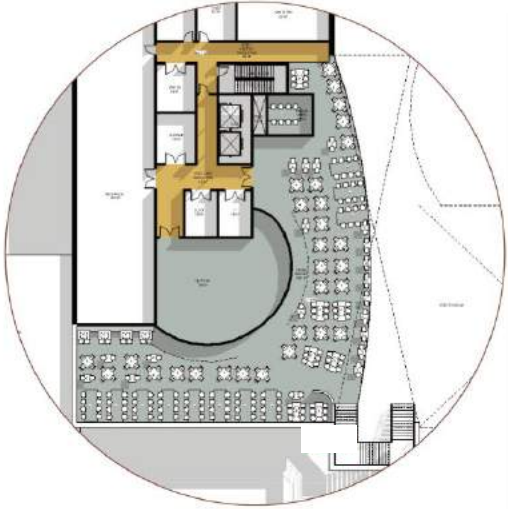
A conceptual rendering of the Dining and Community Commons. This is a potential floor plan of the first floor. Design is subject to change.



LEVEL 1

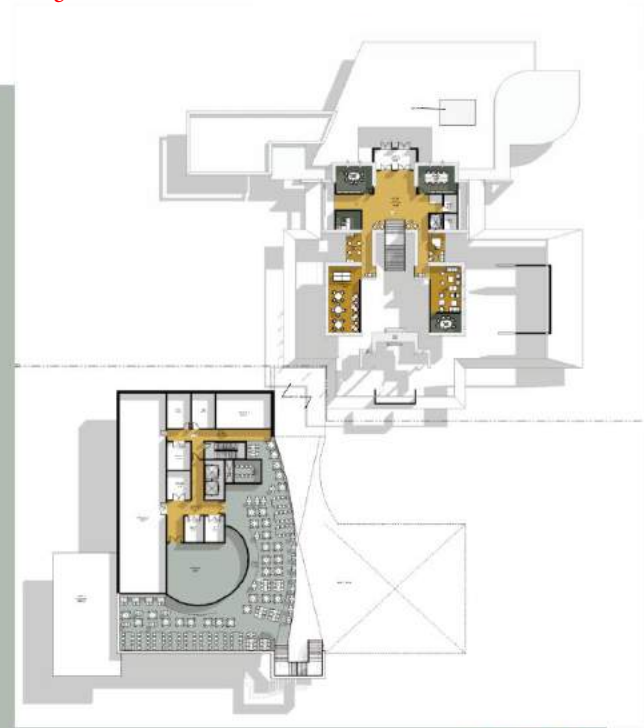


Interiors - Nourish



A conceptual rendering of the Dining and Community Commons. This is a potential floor plan of the second floor. Design is subject to change.

LEVEL 2



Food Service - Servery



Food Service - Servery



Food Service - Servery

10/31/2019 - Town Hall





4 Sustainability

Building Rating System evaluation



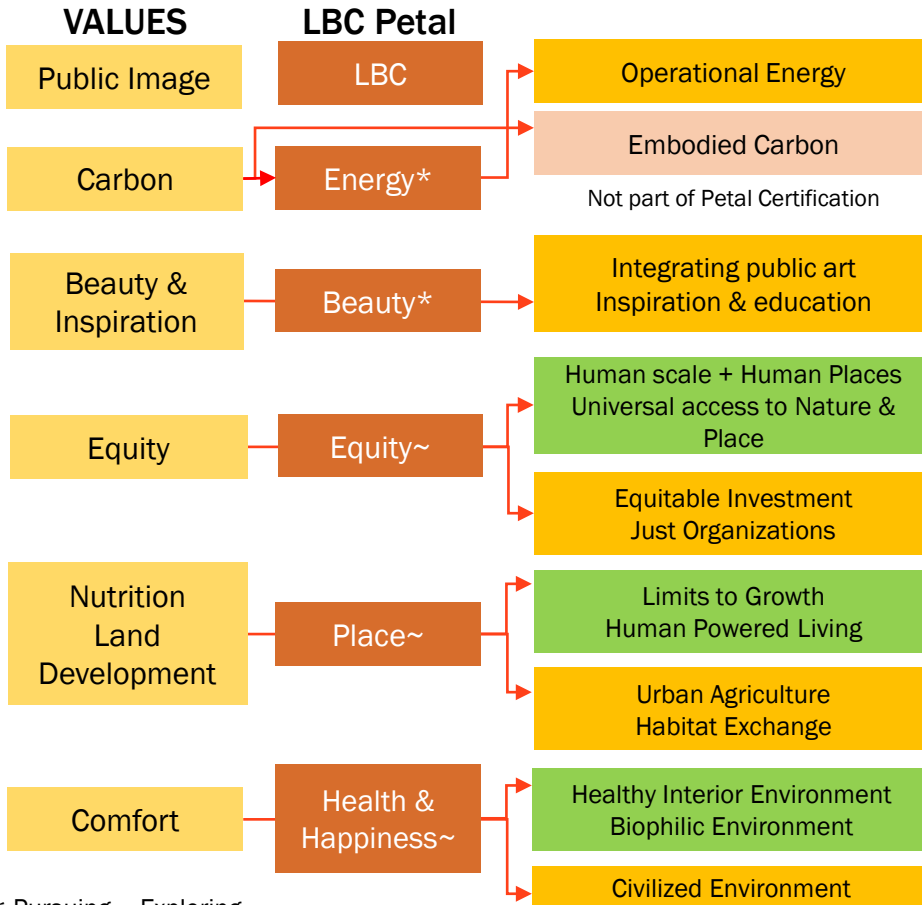
- Alignment with VALUES and Project Goals
- Pre-requisites
- Feasibility of major criteria

VALUES Alignment

Swarthmore College - Dining and Community Commons Project Building Rating System Evaluation

VALUES	Swarthmore Environmental Framework	LEED v4.1	WELL Building Standard v2 pilot	Living Building Challenge v4	Sustainable SITES v2	ENERGY STAR
Top priorities of environmental factors that impact User Experience	Project checklist as of June 1, 2015	Certification	Certification	Full Certification or Petal Certification	Certification	Certification
Public Image		<i>Value of Certification</i>	Community	<i>Value of Certification</i>		
How do design features and programs in the facility illustrate a commitment to environmental stewardship?						
Beauty & Inspiration			Mind	Beauty		
What drives, motivates, and inspires your community to go to the facility?						
Comfort	Indoor Environmental Quality	Indoor Environmental Quality	Thermal Comfort, Light, Air, Sound	Health & Happiness		
Biophilia; Thermal, Acoustic, Visual Comfort; Air Quality; Building Materials						
Nutrition			Nourishment, Movement, Water	Place		
How to promote healthy eating choices and habits?						
Equity				Equity		
How can the facility exemplify inclusion?						
Carbon	Energy	Energy & Atmosphere		Energy		Operational Energy
How important are carbon emissions associated with the design, construction and operation of your facility?						
Land Development	Sustainable Site & Landscaping	Location & Transportation, Sustainable Sites		Place	Site design, construction, operations and maintenance	
How can the site support wellness? Is there a site ecology that needs to be protected or preserved?						

Path to Petal Certification



* Pursuing ~ Exploring

Target: Achieve requirements of 3 Petals



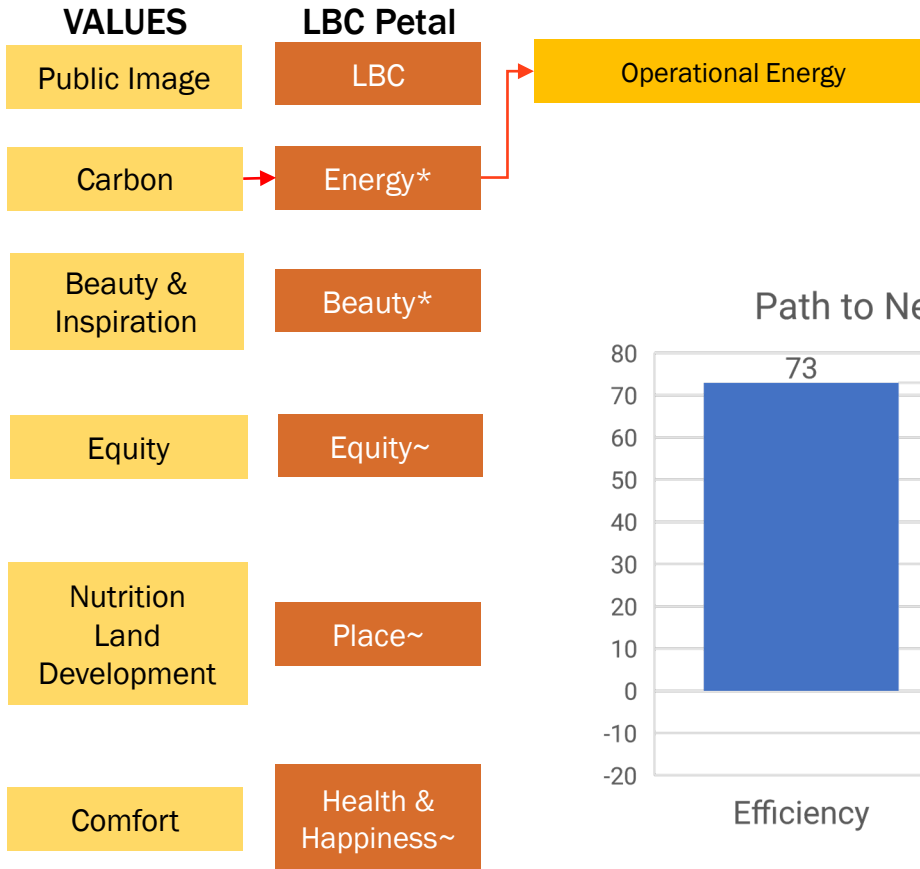
Registered for this version



Opportunity to upgrade a Petal to this version

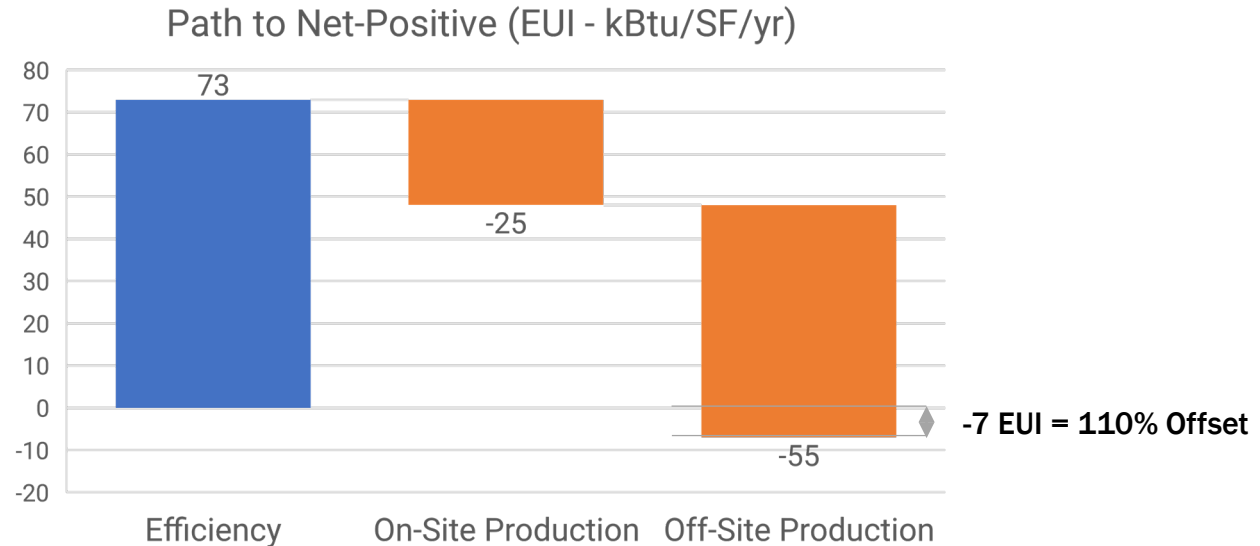
Path to Petal Certification

Target: Achieve requirements of 3 Petals

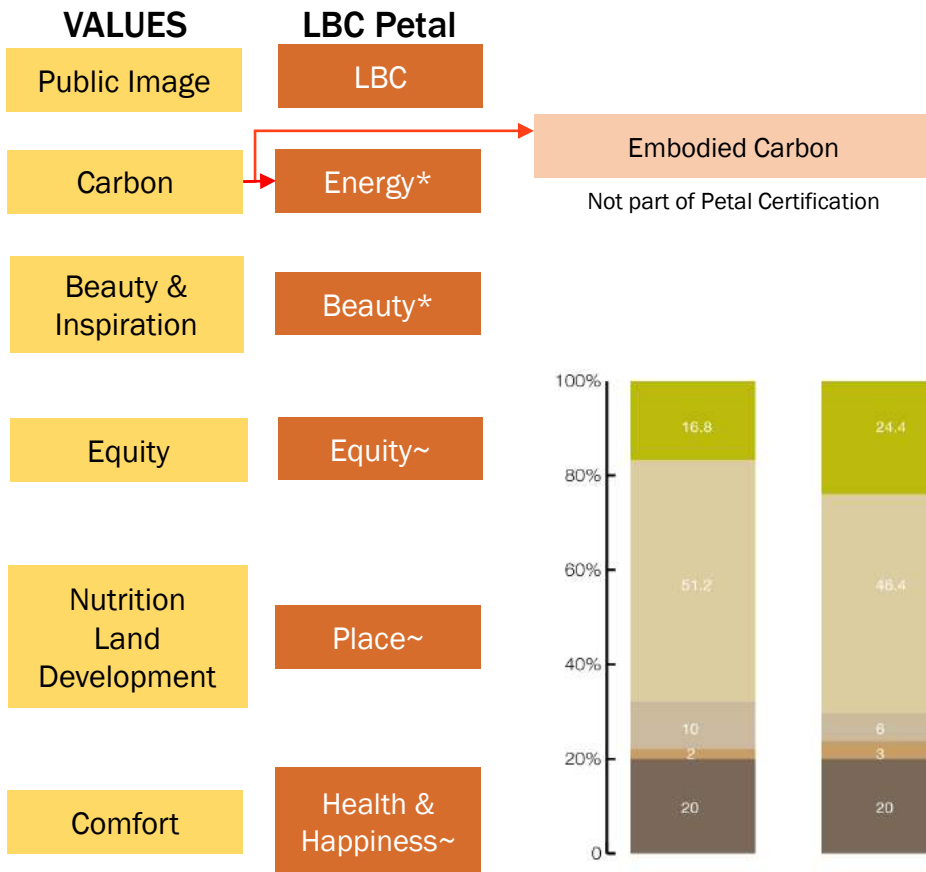


Goal: ZNE | Criteria: 105% of energy produced on-site
Net-Positive Building

Produce 105% more than consumption via a combination of on-site and off-site solar



Path to Petal Certification

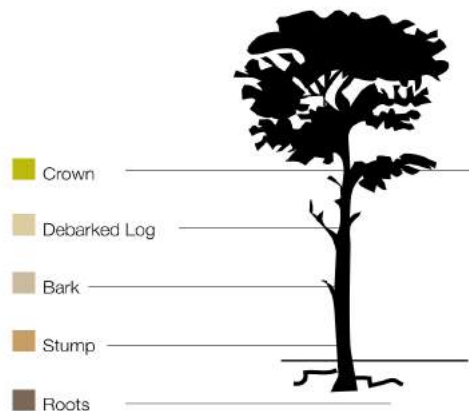
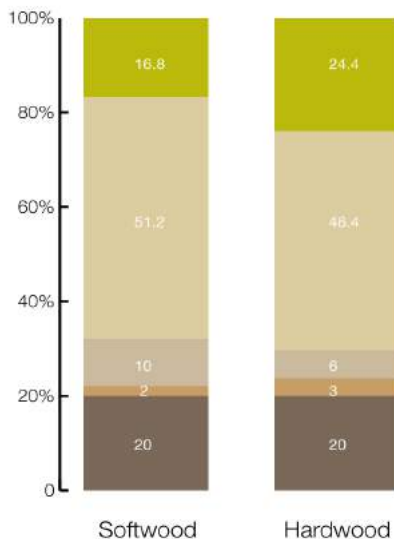


Target: Achieve requirements of 3 Petals

Goal: Reduce embodied carbon | Criteria: None
Embodied Carbon Analysis

Focus first on structure: Mass Timber vs Steel

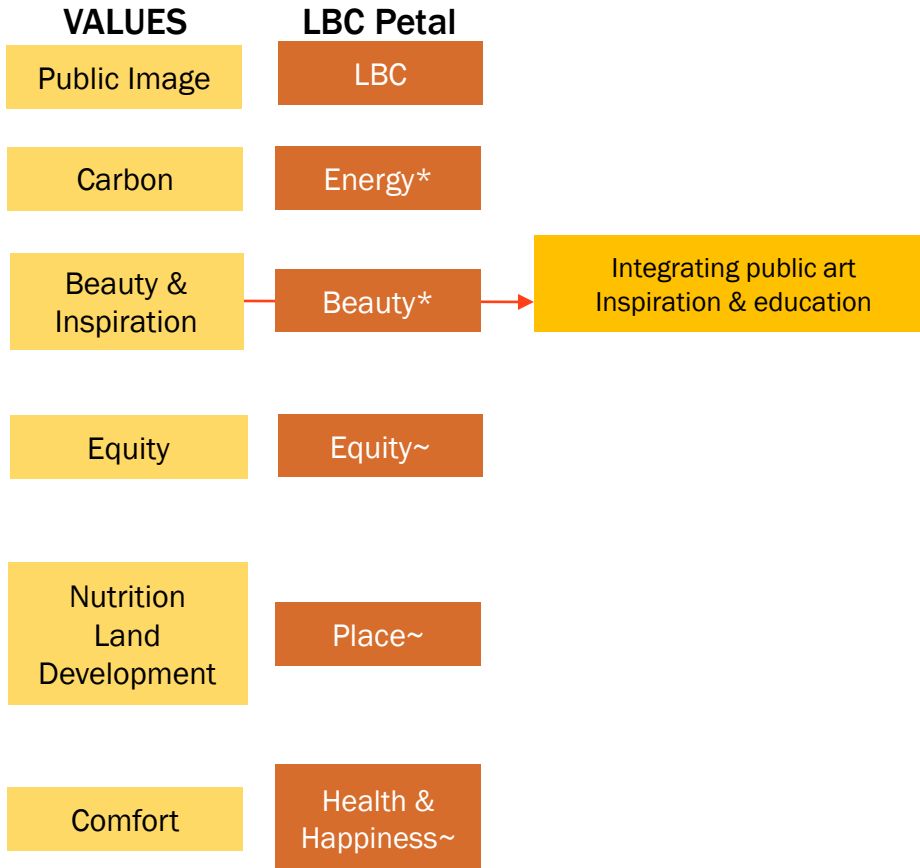
CLT Species: SmartLam - Southern Yellow Pine coming from our Dothan Alabama facility; SPF- Spruce Pine Fir coming from our corporate Columbia Falls facility; Douglas Fir/Larch coming from our corporate Columbia Falls facility



Carbon storage life is
100 years in framing
30 years in furniture
6 years in paper
0 when burnt or decays

Carbon distribution
throughout a tree

Path to Petal Certification



Target: Achieve requirements of 3 Petals

Goal: Integrate Public Art | Criteria: Accessible to public

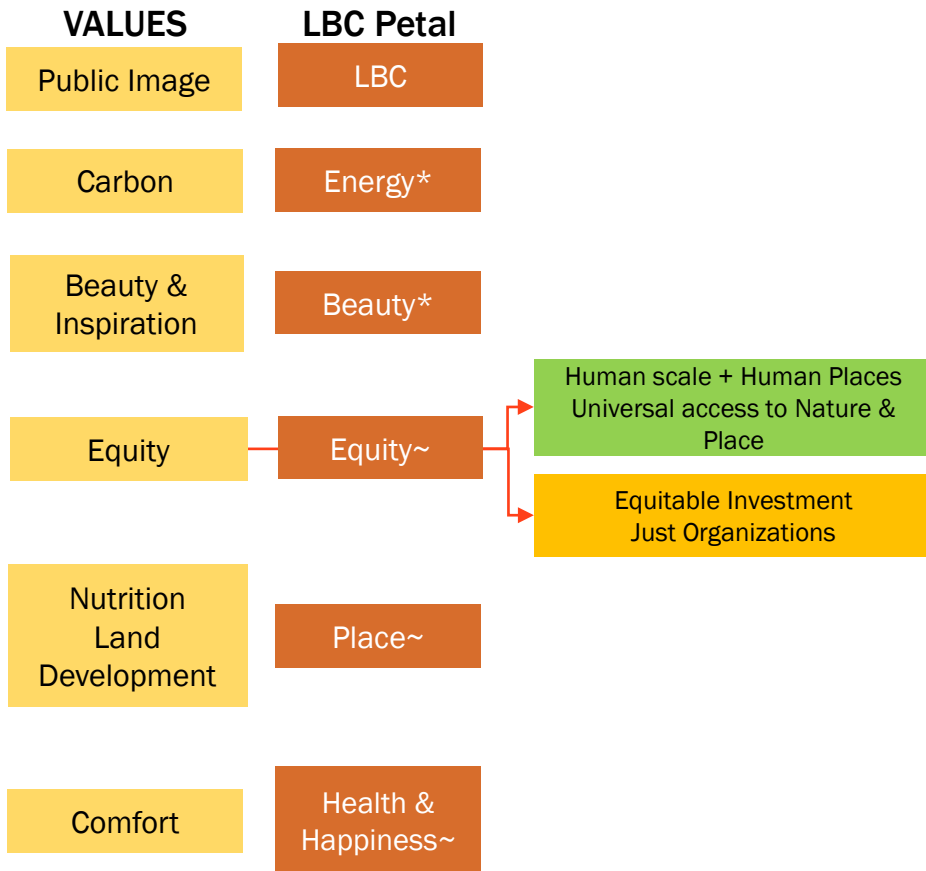
- Identify opportunities for public art through a charrette
- Schematic design budget includes \$20,000 allowance for public art to be incorporated

Goal: Inspiration & education | Criteria: None

- A dynamic dashboard for displaying the ZNE performance of the building from various meters
- An allowance of \$20,000 for the development of this dashboard
- An allowance of \$20,000 for interpretive signage to teach the visitors and occupants about the building

Pursue during Design Development

Path to Petal Certification



* Pursuing ~ Exploring

Target: Achieve requirements of 3 Petals

Goal: Human scale / Universal access | Criteria: programmatic layout and access to social space needs

- Inherent in the design solutions

Goal: Equitable Investment | Criteria: Private entities donate for public good

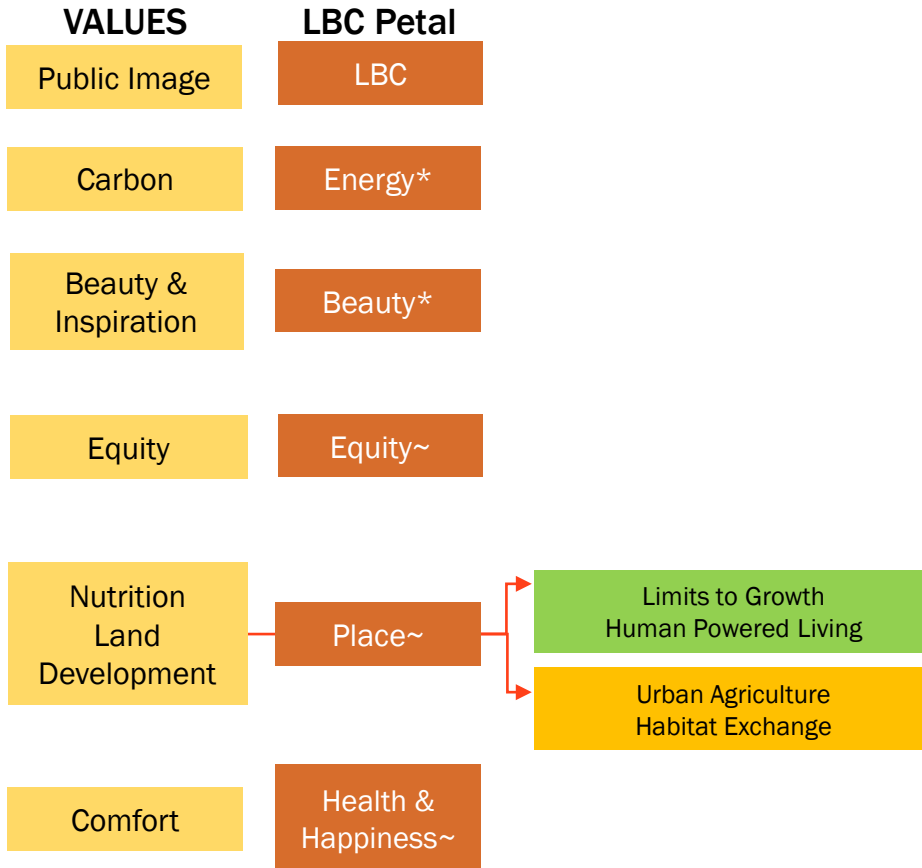
- First option – clarifying Swarthmore Need-Based Scholarship program as an alternate
- Second option – upgrade this Petal to LBC v4 where no Equitable investment required

Goal: Just Organizations | Criteria: Members of Project Team should be certified before project certification

- First option – leverage Integral's Just Label for LBC v3.1
- Second option – DLR Group is considering Piloting Just Label and may be able to satisfy the requirements of TWO Just label organizations including Integral

Further exploration during Design Development

Path to Petal Certification



Target: Achieve requirements of 3 Petals

Goal: Limits to Growth / Human Powered Living | Criteria: Site Design metrics

- Inherent in the design solutions

Goal: Urban Agriculture | Criteria: A ratio of site acreage for food production

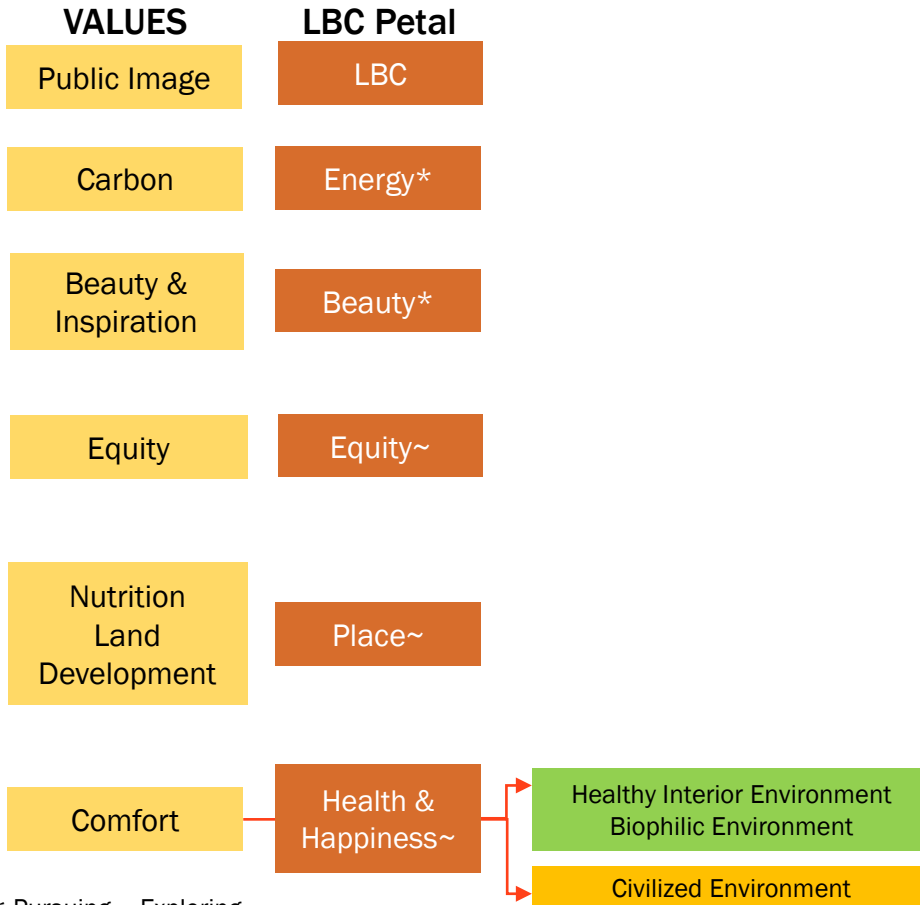
- Use Swarthmore's plan to have a garden for the whole campus and the community (minimum 0.3 acres) in addition to permaculture solutions as part of design

Goal: Habitat Exchange | Criteria: Expand existing thriving wilderness areas and protect them from destruction

- Use Crum Woods Stewardship Committee's Stewardship Plan as an alternate to meet this requirement

Further exploration during Design Development

Path to Petal Certification



Target: Achieve requirements of 3 Petals

Goal: Healthy Interior & Biophilic Design | Criteria: Site Design, planning, fenestration and interiors metrics

- Inherent in the design solutions

Goal: Civilized Environment | Criteria: Access to daylight and air

- Daylighting inherent in design
- Access to operable windows needs further design refinement
- An allowance of \$20,000 for operable windows control

Further exploration during Design Development



Thank you