

POSTGRADUATE ASSOCIATE (PGA) IN SOCIAL NEUROSCIENCE @ YALE UNIVERSITY

Summary

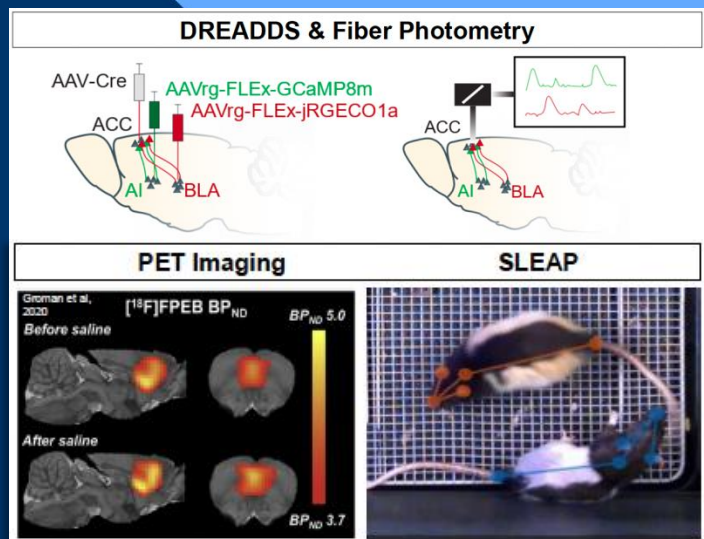
The Taylor Lab in the at Yale University is recruiting a post-graduate associate in Social Neuroscience.

This position will work alongside multiple MD/PhD clinician scientists studying the neural circuitry of prosocial behavior, as well as translational behavioral and pharmacological interventions for psychiatric disorders. Our work integrates approaches in animal behavior, neural circuit recording, computational modeling, and pharmacology. We are seeking a motivated B.A. or B.S. in related fields.

Job Duties

Research - Coordinating behavioral experiments in rats; rodent stereotactic surgery for fiber photometry, PET imaging, chemogenetics, and optogenetics; immunohistochemistry, imaging, and data analysis; behavioral tracking with SLEAP; computational analyses

Administrative - Lab scheduling, ordering animals/reagents, managing a team of undergraduate students.



Employment Terms

The position is for 1 year with renewal pending funding availability. Start date negotiable. Salary standardized for Yale PGAS: 44,400 before tax

Application Materials: Send to Dr. Kietzman (Swarthmore '14) at henry.kietzman@yale.edu

1-Letter of Interest (1 page max)

2-Resume/Curriculum Vitae/NIH Biosketch

3-Contact Information for 2-3 references

Questions? Please email henry.kietzman@yale.edu

