

# BIFURCATION CURVES FOR SOME SINGULAR AND NONSINGULAR PROBLEMS WITH NONLINEAR BOUNDARY CONDITIONS.

J. GODDARD II, Q. MORRIS, R. SHIVAJI, AND B. SON

ABSTRACT. We discuss a quadrature method for generating bifurcation curves of positive solutions to some autonomous boundary value problems with nonlinear boundary conditions. We consider various nonlinearities, including positone and semipositone problems in both singular and nonsingular cases. After analyzing the method in these cases, we provide an algorithm for the numerical generation of bifurcation curves and show its application to selected problems.

## 1. INTRODUCTION

We consider two-point boundary value problems of the form,

$$(1) \quad \begin{cases} -u''(t) = \lambda f(u(t)), t \in (0, 1), \\ u(0) = 0, \\ u'(1) = -c(u(1))u(1), \end{cases}$$

where  $f : (0, \infty) \rightarrow \mathbb{R}$  is a continuously differentiable function which is integrable on  $(0, \epsilon)$  for some  $\epsilon > 0$  and  $c : [0, \infty) \rightarrow (0, \infty)$  is a continuous function. Positive solutions to equations of this form, but with linear boundary conditions, have been well-studied due to their applications in a number of fields, such as combustion theory, nonlinear heat generation, and population dynamics. See [2], [12], and

---

*Key words and phrases.* quadrature method, bifurcation curve, existence, singular problems, nonlinear boundary condition.

[21], respectively, for such examples. Further, problems with nonlinear boundary conditions have application in the study of thermal explosions and population dynamics with density dependent dispersal on the edges (see [19] and [4], respectively for the derivation of such models), and have been the subject of recent mathematical study (see [3],[5],[8],[9],[11],[16],[20], and [22]).

Here, we study positive solutions of (1) when the function  $f$  satisfies one of the additional hypotheses,

(P)  $f(s) > 0$  for all  $s > 0$ , or

(S) there exist unique  $\beta, \theta > 0$  so that  $f(s) < 0$  for  $s \in (0, \beta)$ ,  $f(s) > 0$  for  $s \in (\beta, \infty)$ , and  $F(\theta) = 0$  where  $F(s) = \int_0^s f(r) dr$ .

We note that any solution of (1) must be symmetric about any point  $t_0 \in (0, 1)$  where  $u'(t_0) = 0$  (see proof of Lemma 2). In order to preserve the unique challenges posed by the presence of the nonlinear boundary condition, we consider only solutions where  $u(1) > 0$ , which implies that  $u'(1) < 0$ . When (P) is satisfied, solutions to (1) are concave, while when (S) is satisfied, solutions are convex near  $t = 0$  (and possibly near  $t = 1$ ) and are concave otherwise. See Figure 1 for examples. We further show in Section 2 that each positive solution of

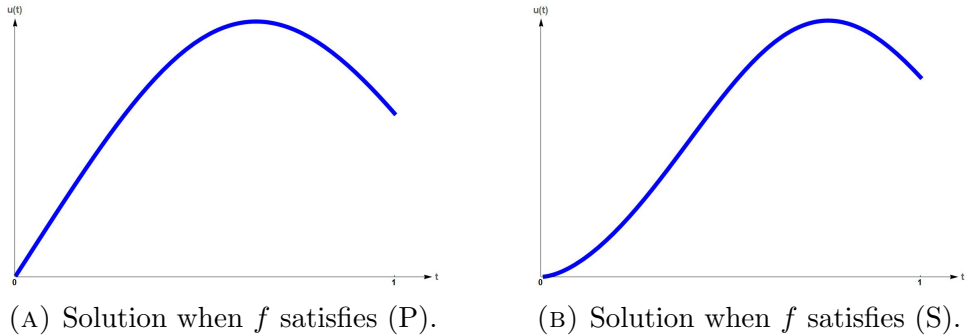


FIGURE 1. Shape of solution for positive and semipositone problems.

(1) has a unique interior maximum, and that if (S) is satisfied, then  $\|u\|_\infty \geq \theta$ .

Of particular interest in this paper is the shape of bifurcation curves. Laetsch studied such problems in [14] with Dirichlet boundary conditions using a quadrature method (or time map analysis). The ideas of Laetsch have been adapted to problems with a number of different boundary conditions, for example Neumann (see [18]), mixed (see [1]), and nonlinear boundary conditions (see [10]). In particular, in [10], the authors study a certain example of  $c$  arising in population dynamics involving density dependent dispersal on the boundary. The goal of this paper is to expand the ideas in [10] for general classes of  $c$  where  $f$  satisfies (P) or (S). In particular, we provide more detailed analysis of the quadrature method for such two-point boundary value problems involving nonlinear boundary conditions. Namely, we establish:

**Theorem 1.1.** *For  $f$  satisfying either (P) or (S), there exists a positive solution  $u \in C^2(0, 1) \cap C^1[0, 1]$  of (1) with  $\|u\|_\infty = \rho$ ,  $u(1) = q$ , and  $0 < q < \rho$  if and only if*

$$(2) \quad \int_0^\rho \frac{ds}{\sqrt{F(\rho) - F(s)}} + \int_q^\rho \frac{ds}{\sqrt{F(\rho) - F(s)}} - \frac{c(q)q}{\sqrt{F(\rho) - F(q)}} = 0$$

and

$$(3) \quad \sqrt{2\lambda} = \frac{c(q)q}{\sqrt{F(\rho) - F(q)}}$$

hold. Further, for a  $(\lambda, \rho, q)$  satisfying (2) and (3), (1) has a positive solution  $u$  given by

$$t\sqrt{2\lambda} = \int_0^{u(t)} \frac{ds}{\sqrt{F(\rho) - F(s)}}; \quad t \in [0, t_0),$$

$$(1-t)\sqrt{2\lambda} = \int_q^{u(t)} \frac{ds}{\sqrt{F(\rho) - F(s)}}; \quad t \in (t_0, 1],$$

$u(t_0) = \rho$  and  $u(1) = q$ , where  $t_0$  satisfies

$$t_0 = \int_0^\rho \frac{ds}{\sqrt{F(\rho) - F(s)}} / \left( \int_0^\rho \frac{ds}{\sqrt{F(\rho) - F(s)}} + \int_q^\rho \frac{ds}{\sqrt{F(\rho) - F(s)}} \right).$$

**Theorem 1.2.** *If  $f$  satisfies (P), then for every  $\rho > 0$ , there exists a  $q > 0$  so that (2) is satisfied. Similarly, if  $f$  satisfies (S), then for every  $\rho \geq \theta$ , there exists a  $q > 0$  so that (2) is satisfied.*

To continue our analysis, we assume that  $f$  satisfies one of

- (P1) (P) and  $f(0) > 0$ ,
- (P2) (P) and  $\lim_{s \rightarrow 0^+} f(s) = \infty$ ,
- (S1) (S) and  $f(0) < 0$ , or
- (S2) (S) and  $\lim_{s \rightarrow 0^+} f(s) = -\infty$ .

Cases (P1) and (S1) are problems that are referred to in the literature as positone and semipositone, respectively, where we drop the requirement that  $f$  be nondecreasing. In [17], the author gives an overview of results for positone problems, while also addressing some difficulties encountered in dealing with semipositone problems. Semipositone problems were first treated in [6], and continue to be of great interest to mathematicians due to the difficulty in establishing positivity of solutions, and to scientists involved in management of natural resources. See [3] and [8] for recent work on semipositone problems with nonlinear boundary conditions of the form studied here.

Cases (P2) and (S2) are problems that are referred to in the literature as infinite positone and infinite semipositone, respectively. For an overview of results for infinite positone and infinite semipositone

problems, see [7] and [15]. For infinite positive and infinite semipositone problems with nonlinear boundary conditions, see [13] and [16]. In these cases, we establish:

**Theorem 1.3.** *If  $f$  satisfies either (P1) or (P2) and  $s + c(s)s$  is continuously differentiable and nondecreasing for all  $s > 0$ , then for each fixed  $\rho > 0$ , there exists a unique  $q > 0$  so that (2) is satisfied.*

**Theorem 1.4.** *If  $f$  satisfies either (S1) or (S2),  $c(s)s$  is continuously differentiable, and either*

(S3)  $\frac{s+c(s)s}{\sqrt{-F(s)}}$  *is nondecreasing for  $s \in (0, \beta)$  and  $s + c(s)s$  is nondecreasing for all  $s > 0$ , or*

(S4)  $(f(s)c(s)s)' > 2f(s)$  *for  $s \in (0, \beta)$  and  $c(s)s$  is nondecreasing for all  $s > 0$ ,*

*is satisfied, then for each fixed  $\rho \geq \theta$ , there exists a unique  $q > 0$  so that (2) is satisfied.*

In Section 2, we prove Theorems 1.1-1.4. In Section 3, we provide Mathematica-generated plots of the bifurcation curves for some specific problems, and in Section 4, we present an interesting example and its bifurcation curve where the hypotheses of Theorem 1.4 are violated and for fixed  $\rho$  in a certain range, there exist multiple values of  $q$  satisfying (2).

## 2. PROOFS OF THEOREMS 1.1-1.4

**2.1. Proof of Theorem 1.1.** First we establish the following two lemmas needed to prove our results.

**Lemma 1.** *If  $f$  satisfies (S) and  $\rho < \theta$ , then there is no  $\lambda > 0$  for which (1) has a positive solution,  $u$ , satisfying  $\|u\|_\infty = \rho$ .*

**Proof:** Assume to the contrary that  $u$  is a positive solution to (1) for some  $\lambda > 0$  such that  $\|u\|_\infty = \rho < \theta$ . Note that  $u'(1) < 0$ , since we are only interested in the case where  $u(1) > 0$ . Hence, there exists  $t_0 \in (0, 1)$  such that  $u'(t_0) = 0$  and  $u(t_0) = \rho$ . Now, multiplying the differential equation by  $u'$ , we obtain:

$$-\left[\frac{(u'(t))^2}{2}\right]' = \lambda(F(u(t)))'.$$

Further, integrating we obtain

$$(4) \quad (u'(t))^2 = 2\lambda[F(\rho) - F(u(t))]; \quad t \in (0, t_0).$$

But this implies that  $(u'(0))^2 = 2\lambda F(\rho) < 0$ , a contradiction. Hence, no such solution can exist.  $\blacksquare$

**Lemma 2.** *Any positive solution  $u$  of (1) has a unique interior maximum at some  $t_0 \in (0, 1)$ , is strictly increasing on  $(0, t_0)$ , is strictly decreasing on  $(t_0, 1)$ , and is symmetric about  $t_0$ .*

**Proof:** Let  $t_0 \in (0, 1)$  be such that  $\|u\|_\infty = u(t_0) = \rho$ . Suppose there exists another local maximum. Then there must be a local minimum at some  $t_1 \in (0, 1)$ , at which  $u''(t_1) \geq 0$ , which implies that  $u(t_1) \leq \beta$ . Let  $E(t) = \lambda F(u(t)) + \frac{1}{2}(u'(t))^2$  for  $t \in (0, 1)$ . A simple calculation will show that  $E'(t) = 0$ , and hence  $E(t)$  is constant on  $[0, 1]$ . But  $E(t_0) = \lambda F(\rho) \geq 0$  while  $E(t_1) = \lambda F(u(t_1)) < 0$ , and hence we have a contradiction. Therefore,  $t_0$  is the unique critical point and from (4), we easily see that

$$(5) \quad u'(t) = \begin{cases} \sqrt{2\lambda[F(\rho) - F(u(t))]} > 0; & t \in (0, t_0), \\ -\sqrt{2\lambda[F(\rho) - F(u(t))]} < 0; & t \in (t_0, 1). \end{cases}$$

Further, note that both  $w_1(t) = u(t_0+t)$  and  $w_2(t) = u(t_0-t)$  satisfy

$$\begin{cases} -w''(t) = \lambda f(w(t)), t \in (0, 1), \\ w(0) = \rho, \\ w'(0) = 0. \end{cases}$$

Hence, by Picard's Theorem, we have  $w_1(t) = w_2(t)$  which implies that  $u$  is symmetric about  $t_0$ .  $\blacksquare$

We now begin the proof of Theorem 1.1 by showing first that if  $u \in C^2(0, 1) \cap C^1[0, 1]$  is a positive solution to (1) with  $\|u\|_\infty = u(t_0) = \rho$  and  $u(1) = q$ , then  $\lambda$ ,  $\rho$ , and  $q$  must satisfy (2) and (3). We note here that the improper integral in (2) is convergent since  $f(\rho) > 0$ .

Integrating (5), we obtain

$$(6) \quad t\sqrt{2\lambda} = \int_0^{u(t)} \frac{ds}{\sqrt{F(\rho) - F(s)}}; \quad t \in (0, t_0),$$

and

$$(7) \quad (1-t)\sqrt{2\lambda} = \int_q^{u(t)} \frac{ds}{\sqrt{F(\rho) - F(s)}}; \quad t \in (t_0, 1).$$

Setting  $t = t_0$ , we obtain

$$(8) \quad t_0\sqrt{2\lambda} = \int_0^\rho \frac{ds}{\sqrt{F(\rho) - F(s)}},$$

and

$$(9) \quad (1-t_0)\sqrt{2\lambda} = \int_q^\rho \frac{ds}{\sqrt{F(\rho) - F(s)}}.$$

Adding (8) and (9), we obtain

$$\sqrt{2\lambda} = \int_0^\rho \frac{ds}{\sqrt{F(\rho) - F(s)}} + \int_q^\rho \frac{ds}{\sqrt{F(\rho) - F(s)}},$$

and hence from (8) we obtain

$$(10) \quad t_0 = \int_0^\rho \frac{ds}{\sqrt{F(\rho) - F(s)}} / \left( \int_0^\rho \frac{ds}{\sqrt{F(\rho) - F(s)}} + \int_q^\rho \frac{ds}{\sqrt{F(\rho) - F(s)}} \right).$$

Further, using the boundary conditions and (5), we obtain

$$-u'(1) = c(q)q = \sqrt{2\lambda [F(\rho) - F(q)]}.$$

Hence (2) and (3) are satisfied.

Next, if  $\lambda$ ,  $\rho$ , and  $q$  satisfy (2) and (3), let  $t_0$  be defined by (10), and define  $u : [0, 1] \rightarrow [0, \rho]$  via (6) and (7) for  $t \in (0, t_0) \cup (t_0, 1)$  with  $u(0) = 0$ ,  $u(t_0) = \rho$ ,  $u(1) = q$ . Note that  $u$  is well defined on  $(0, t_0)$  since both

$$\int_0^u \frac{ds}{\sqrt{F(\rho) - F(s)}},$$

and  $t\sqrt{2\lambda}$  increase from 0 to

$$\int_0^\rho \frac{ds}{\sqrt{F(\rho) - F(s)}},$$

as  $u$  increases from 0 to  $\rho$  and  $t$  increases from 0 to  $t_0$ , respectively.

Also,  $u$  is well defined on  $(t_0, 1)$  since both

$$\int_q^u \frac{ds}{\sqrt{F(\rho) - F(s)}},$$

and  $(1 - t)\sqrt{2\lambda}$  decrease from

$$\int_q^\rho \frac{ds}{\sqrt{F(\rho) - F(s)}},$$

to 0 as  $u$  decreases from  $\rho$  to  $q$  and  $t$  increases from  $t_0$  to 1, respectively.

Now, define  $H : (0, t_0) \times (0, \rho) \rightarrow \mathbb{R}$  by

$$H(\ell, v) = \int_0^v \frac{ds}{\sqrt{F(\rho) - F(s)}} - \ell\sqrt{2\lambda}.$$



Clearly  $H$  is  $C^1$ ,  $H(t, u(t)) = 0$ ;  $t \in (0, t_0)$  and

$$H_v|_{(t, u(t))} = \frac{1}{\sqrt{F(\rho) - F(u(t))}} \neq 0.$$

Hence, by the Implicit Function Theorem,  $u$  is  $C^1$  on  $(0, t_0)$ . Similarly,  $u$  is  $C^1$  on  $(t_0, 1)$ , and from (6)-(7), we get

$$(11) \quad u'(t) = \begin{cases} \sqrt{2\lambda [F(\rho) - F(u(t))]}; & t \in (0, t_0), \\ -\sqrt{2\lambda [F(\rho) - F(u(t))]}; & t \in (t_0, 1). \end{cases}$$

Differentiating (11) again, we get

$$-u''(t) = \lambda f(u(t)); \quad t \in (0, t_0) \cup (t_0, 1).$$

But  $u(t_0) = \rho$  and  $f$  is continuous, and hence  $u \in C^2(0, 1) \cap C^1[0, 1]$ . Further, (11) implies that  $-u'(1) = \sqrt{2\lambda [F(\rho) - F(q)]}$ , and hence by (3) we have  $u'(1) + c(u(1))u(1) = 0$ . Thus  $u$  is a solution of (1).

**2.2. Proof of Theorem 1.2.** Define

$$J(\rho, q) := \int_0^\rho \frac{ds}{\sqrt{F(\rho) - F(s)}} + \int_q^\rho \frac{ds}{\sqrt{F(\rho) - F(s)}} - \frac{c(q)q}{\sqrt{F(\rho) - F(q)}},$$

and note that if (P) is satisfied, then for every fixed  $\rho > 0$ , there exists a  $q > 0$  so that  $J(\rho, q) = 0$  since

$$J(\rho, 0) = 2 \int_0^\rho \frac{ds}{\sqrt{F(\rho) - F(s)}} > 0 \quad \text{and} \quad \lim_{q \rightarrow \rho} J(\rho, q) = -\infty.$$

Hence,  $\rho, q$  satisfy (2). Similarly, if (S) is satisfied, then the claim holds for all  $\rho > \theta$ . For  $\rho = \theta$ , we again have

$$\lim_{q \rightarrow \theta} J(\theta, q) = -\infty,$$

and observe that

$$\begin{aligned}
\lim_{q \rightarrow 0} J(\theta, q) &= 2 \int_0^\theta \frac{ds}{\sqrt{-F(s)}} - \lim_{q \rightarrow 0^+} \frac{c(q)q}{\sqrt{-F(q)}} \\
&= 2 \int_0^\theta \frac{ds}{\sqrt{-F(s)}} - \lim_{q \rightarrow 0^+} \frac{c(q)q}{\sqrt{-qf(z)}} \\
&= 2 \int_0^\theta \frac{ds}{\sqrt{-F(s)}} \\
&> 0
\end{aligned}$$

for some  $z \in (0, q)$ . Hence, there exists  $q > 0$  satisfying (2) for all  $\rho \geq \theta$ .

**2.3. Proof of Theorem 1.3.** Let  $\rho > 0$  be fixed. The existence of  $q > 0$  satisfying (2) follows from Theorem 1.2. As for the uniqueness of  $q$ , a straightforward calculation will show

$$(12) \quad J_q(\rho, q) = -\frac{2[1 + (c(q)q)'](F(\rho) - F(q)) + f(q)c(q)q}{2(F(\rho) - F(q))^{\frac{3}{2}}}$$

Since  $f(q) > 0$  and  $1 + (c(s)s)' = (s + c(s)s)' > 0$  by assumption,  $J_q(\rho, q) < 0$  for all  $q > 0$ , and hence there cannot be two values of  $q$  such that  $J(\rho, q) = 0$ .

**2.4. Proof of Theorem 1.4.** Let  $\rho \geq \theta$  be fixed. The existence of  $q > 0$  satisfying (2) again follows from Theorem 1.2.

If (S3) holds, then for  $s \in (0, \beta)$ ,

$$\left( \ln \left( \frac{s + c(s)s}{\sqrt{-F(s)}} \right) \right)' \geq 0.$$

A straightforward calculation will show that this implies that

$$(13) \quad \frac{1 + (c(s)s)'}{s + c(s)s} \geq \frac{-f(s)}{2(-F(s))},$$

and we further observe from (13) that, for  $s \in (0, \beta)$ ,

$$(14) \quad \frac{1 + (c(s)s)'}{c(s)s} \geq \frac{1 + (c(s)s)'}{s + c(s)s} \geq \frac{-f(s)}{2(-F(s))} \geq \frac{-f(s)}{2(F(\rho) - F(s))}.$$

Hence, using (14), we conclude that

$$(15) \quad 2[1 + (c(s)s)'](F(\rho) - F(s)) + f(s)c(s)s > 0,$$

for  $s \in (0, \beta)$ . Since  $f(s) \geq 0$  for all  $s \in [\beta, \infty)$ , it is easy to see that the inequality (15) also holds for  $s \in [\beta, \rho]$ . Therefore, by (12), we have  $J_q(\rho, q) < 0$  for all  $q > 0$ , and the result follows.

If (S4) holds, then let

$$g(s) = 2(F(\rho) - F(s)) + f(s)c(s)s,$$

and observe that  $g$  is continuous on  $[0, \rho]$ ,  $g(0) = 2F(\rho) \geq 0$ , and  $g'(s) > 0$  for  $s \in (0, \beta)$  by (S4). Hence,  $g(s) > 0$  on  $(0, \beta]$ . Now,  $(c(s)s)' \geq 0$  implies  $1 + (c(s)s)' \geq 1$ , and therefore,  $J_q(\rho, q) < 0$  for  $q \in (0, \beta]$ . For  $q \in (\beta, \rho)$ , since  $f(s) > 0$  for all  $s \in (\beta, \rho)$ , it easily follows that  $J_q(\rho, q) < 0$  for all  $q > 0$  from (12), and the result follows.

### 3. APPLICATION OF METHOD TO SOME EXAMPLES

Below, we provide several examples of bifurcation diagrams which are numerically generated in Mathematica. The general procedure is outlined below.

begin

$$N = 1000;$$

$$pts = \{\};$$

$$\rho_{\text{step}} = (\rho_{\text{max}} - \rho_{\text{min}})/N;$$

for  $i := 0$  to  $N$

```

     $\rho = \rho_{\min} + i * \rho_{\text{step}};$ 
     $q = \text{FindRoot}[J(\rho, s), s];$ 
     $\lambda = (c(q) * q)^2 / (2[F(\rho) - F(q)]);$ 
     $pts = \text{AppendTo}[pts, \{\lambda, \rho\}]$ 
end
ListPlot[pts]
end

```

We apply this algorithm to (1) with the following nonlinearities,

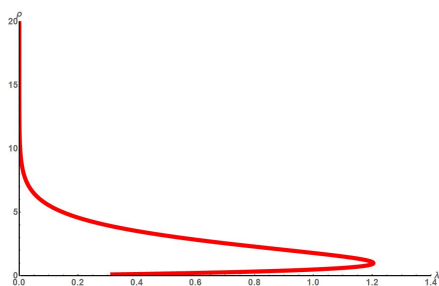
$$(16) \quad f(u) = e^u,$$

$$(17) \quad f(u) = e^{\frac{6u}{6+u}},$$

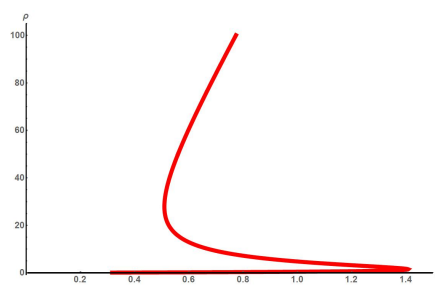
$$(18) \quad f(u) = \frac{u-1}{\sqrt{u}},$$

$$(19) \quad f(u) = u^3 - 10u^2 + 40u - 10,$$

with the nonlinearity in the boundary condition fixed as  $c(s) = \frac{1}{s+1}$  for each problem. Note that the nonlinearities (16) and (17) are both positive and that  $s + c(s)s$  is nondecreasing. Hence, the results of Theorem 1.3 apply. Bifurcation diagrams for these problems are shown in Figure 2.



(A) Bifurcation Curve for (16).



(B) Bifurcation Curve for (17).

FIGURE 2. Bifurcation diagrams for some positive problems.

The nonlinearities (18) and (19) are infinite semipositone and semipositone, respectively, and satisfy (S4). Hence, the results of Theorem 1.4 apply. Bifurcation diagrams for these problems are shown in Figure 3.

It is well known that the shape of bifurcation curves depends on characteristics of the nonlinearity  $f$  (see [17]). The nonlinearities (17) and (18) are both sublinear at infinity, while the nonlinearities (16) and (19) are both superlinear at infinity. Furthermore, the nonlinearities in (17) and (19) give rise to what are referred to in the literature as S-shaped and reverse S-shaped bifurcation curves. See [2] and [6] for early work on S-shaped and reverse S-shaped bifurcation curves, respectively.

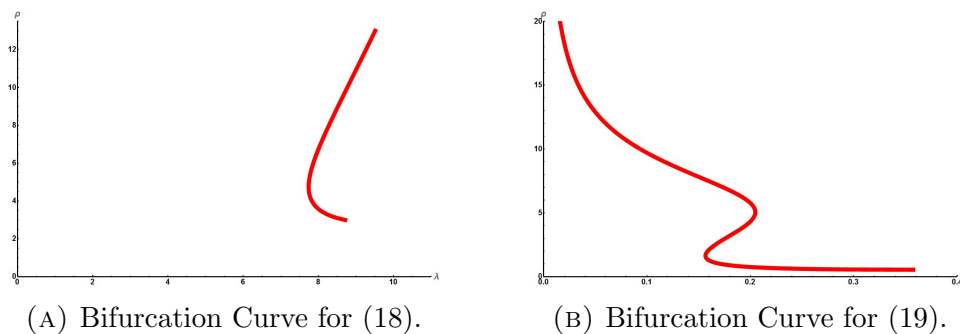


FIGURE 3. Bifurcation diagrams for some semipositone problems.

Of particular interest in the semipositone problems (18) and (19) is the shape of the solution when  $\rho = \theta$ . As we exhibit in Figures 4 and 5, our computations illustrate that solutions to (18) or (19) with  $\|u\|_\infty = \theta$  also satisfy  $u'(0) = 0$ .

#### 4. MULTIPLICITY GENERATED BY $s + c(s)s$ OSCILLATION

In the case that  $(s^* + c(s^*)s^*)' < 0$  for some  $s^* \in [0, \infty)$ , Theorems 1.3 and 1.4 do not apply. In such cases, it is possible that for some

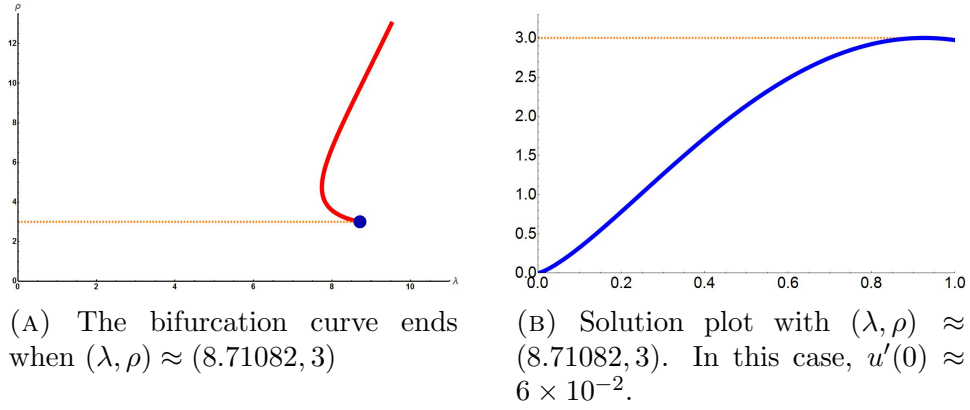


FIGURE 4. Behavior of solutions at endpoint of bifurcation curve for a sublinear infinite semipositone problem.

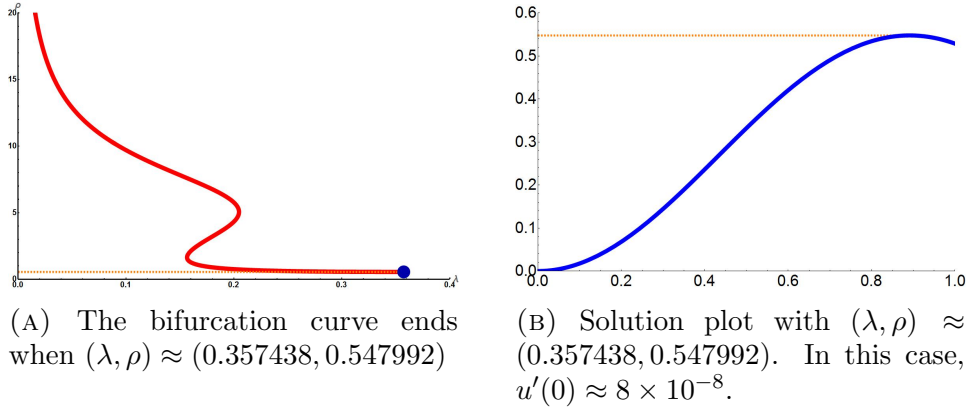


FIGURE 5. Behavior of solutions at endpoint of bifurcation curve for a superlinear semipositone problem.

fixed  $\rho \geq \theta$ , there are multiple values of  $q > 0$  so that (2) is satisfied.

Below, we provide such an example.

Consider

$$(20) \quad \begin{cases} -u''(t) = \lambda ((u(t))^2 - 3), t \in (0, 1), \\ u(0) = 0, \\ u'(1) = -\left(\frac{1}{2}(u(1) - 10)^2 + 1\right) u(1), \end{cases}$$

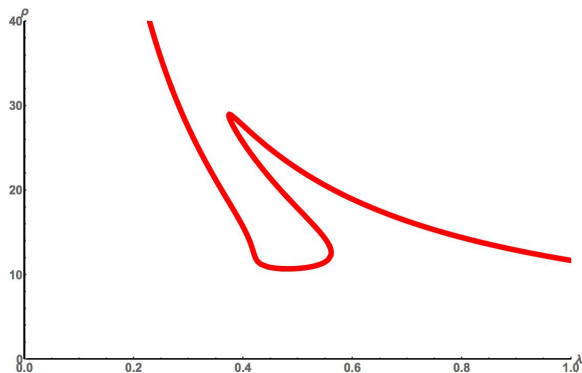


FIGURE 6. A bifurcation curve of (20).

and note that though  $\frac{s+c(s)s}{\sqrt{-F(s)}}$  is nondecreasing on  $(0, \sqrt{3})$ ,  $s + c(s)s$  is decreasing on the interval

$$\left( \frac{20 - 2\sqrt{22}}{3}, \frac{20 + 2\sqrt{22}}{3} \right).$$

Applying the method from the previous section, we now need to consider the possibility that for a fixed  $\rho \geq \theta$ , there may exist multiple  $q$  values so that (2) is satisfied.

In Figure 6, we provide the numerically generated bifurcation curve, and observe that the oscillation of  $s + c(s)s$  has introduced multiplicity of solutions for some range of  $\lambda$ . In particular, if we track  $q$  values as we plot the bifurcation diagram, we observe numerical evidence of some correspondence to changes in the sign of  $(s + c(s)s)'$ .

Many problems related to the existence, uniqueness, and exact multiplicity of solutions to (1) remain open. Our aim in this paper has been to provide a quadrature method framework for addressing such problems, proofs of some results related to solutions of (2), and numerically generated bifurcation curves, which may motivate further inquiry.

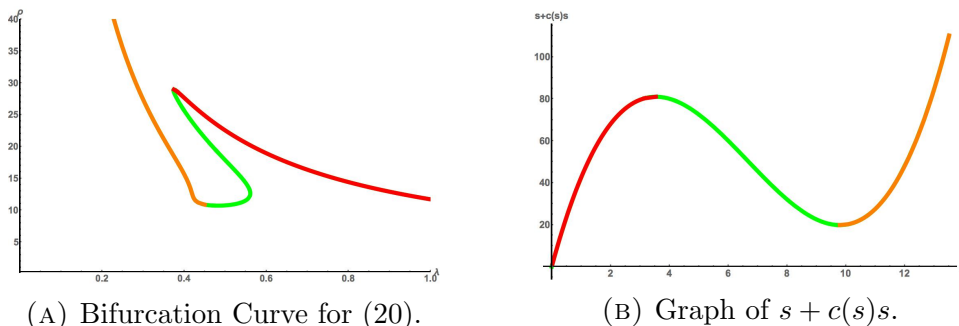


FIGURE 7. Correspondence between shape of the bifurcation diagram and shape of  $s + c(s)s$ .

#### REFERENCES

- [1] V. Anuradha, C. Maya, and R. Shivaji. Positive solutions for a class of non-linear boundary value problems with Neumann-Robin boundary conditions. *J. Math. Anal. Appl.*, 236(1):94–124, 1999.
- [2] K. J. Brown, M. M. A. Ibrahim, and R. Shivaji.  $S$ -shaped bifurcation curves. *Nonlinear Anal.*, 5(5):475–486, 1981.
- [3] D. Butler, E. Ko, E. Lee, and R. Shivaji. Positive radial solutions for elliptic equations on exterior domains with nonlinear boundary conditions. *Commun. Pure Appl. Anal.*, 13(6):2713–2731, 2014.
- [4] R. Cantrell and C. Cosner. *Spatial Ecology via Reaction-Diffusion Equations*. Mathematical and Computational Biology. Wiley, 2003.
- [5] R. Cantrell and C. Cosner. On the effects of nonlinear boundary conditions in diffusive logistic equations on bounded domains. *J. Differential Equations*, 231(2):768–804, 2006.
- [6] A. Castro and R. Shivaji. Nonnegative solutions for a class of nonpositone problems. *Proc. Roy. Soc. Edinburgh Sect. A*, 108(3-4):291–302, 1988.
- [7] M. Chhetri and S. Robinson. Existence and multiplicity of positive solutions for classes of singular elliptic pdes. *J. Math. Anal. Appl.*, 357(1):176–182, 2009.
- [8] R. Dhanya, Q. Morris, and R. Shivaji. Existence of positive radial solutions for superlinear, semipositone problems on the exterior of a ball. *J. Math. Anal. Appl.*, 434(2):1533–1548, 2016.



- [9] J. Goddard II, E. K. Lee, and R. Shivaji. Population models with nonlinear boundary conditions. In *Electron. J. Differ. Equ. Conf.*, volume 19, pages 135–149, 2010.
- [10] J. Goddard II, J. Price, and R. Shivaji. Analysis of steady states for classes of reaction-diffusion equations with U-shaped density dependent dispersal on the boundary. 2017. In preparation.
- [11] P. V. Gordon, E. Ko, and R. Shivaji. Multiplicity and uniqueness of positive solutions for elliptic equations with nonlinear boundary conditions arising in a theory of thermal explosion. *Nonlinear Anal. Real World Appl.*, 15:51–57, 2014.
- [12] H. B. Keller and D. S. Cohen. Some positive problems suggested by nonlinear heat generation. *J. Math. Mech.*, 16:1361–1376, 1967.
- [13] E. Ko, E.K. Lee, R. Shivaji, and B. Son. Uniqueness of positive solutions for a singular nonlinear eigenvalue problem when a parameter is large. *Bull. Belg. Math. Soc. Simon Stevin*, 21(1):179–184, 2014.
- [14] T. Laetsch. The number of solutions of a nonlinear two point boundary value problem. *Indiana Univ. Math. J.*, 20:1–13, 1970/1971.
- [15] E. K. Lee, R. Shivaji, and J. Ye. Subsolutions: a journey from positive to infinite semipositone problems. *Electron. J. Differ. Equ. Conf.*, 17:123–131, 2009.
- [16] E.K. Lee, R. Shivaji, and B. Son. Positive radial solutions to classes of singular problems on the exterior domain of a ball. *J. Math. Anal. Appl.*, 434(2):1597–1611, 2016.
- [17] P.-L. Lions. On the existence of positive solutions of semilinear elliptic equations. *SIAM Rev.*, 24(4):441–467, 1982.
- [18] A.R. Miciano and R. Shivaji. Multiple positive solutions for a class of semipositone neumann two point boundary value problems. *J. Math Anal. Appl.*, 178(1):102 – 115, 1993.
- [19] A. Miyake, M. Wakakura, T. Uchida, and A. Ushikubo. Investigation of accidental explosion of raw garbage composting system. *J. Therm. Anal. Calorim.*, 85(3):643–649, 2006.

- [20] Q. Morris, R. Shivaji, and I. Sim. Existence of a positive radial solution for superlinear, semipositone  $p$ -Laplacian problem on the exterior of a ball. *To appear in Proc. Roy. Soc. Edinburgh Sect. A*, 2016.
- [21] S. Oruganti, J. Shi, and R. Shivaji. Diffusive logistic equation with constant yield harvesting. I. Steady states. *Trans. Amer. Math. Soc.*, 354(9):3601–3619, 2002.
- [22] H. Quoirin and K. Umezu. The effects of indefinite nonlinear boundary conditions on the structure of the positive solutions set of a logistic equation. *J. Differential Equations*, 257(11):3935–3977, 2014.